

**Proposed LRD, Marble Arch Site, Davitt Rd
& Benbulbin Rd, Dublin 12**

**Residential Travel Plan
222184-PUNCH-XX-XX-RP-C-0004**

November 2023

Document Control

Document Number: 222184-PUNCH-XX-XX-RP-C-0004

Status	Revision	Description	Date	Prepared	Checked	Approved
A0	C01	Opinion Response	01/11/2023	JP Murray	P Casey	P Casey

Table of Contents

Document Control.....	i
Table of Contents	
1 Executive Summary	1
2 Introduction.....	2
2.1 Site Location.....	2
2.2 Objectives of the Plan	4
2.3 Census Data	6
3 Site Conditions	9
3.1 Site Access	9
3.2 Parking	9
3.2.1 Car Parking.....	11
3.2.2 Electric Vehicle Charging Points	12
3.2.3 Motorcycle Parking Provision	12
3.3 Pedestrians	12
3.4 Cycling.....	12
3.5 Public Transport.....	12
3.5.1 Bus Services - Local.....	12
3.5.2 Luas Services	13
3.5.3 Train Services	14
3.5.4 Taxi Services.....	14
3.6 Transport Services	15
3.6.1 Car Club - Shared Cars	15
3.6.2 Car Sharing.....	15
3.7 Potential for Pedestrians trips	15
3.8 Cycle Parking	17
4 Consultation	19
5 Action Plan.....	20
6 Monitoring and Review	22
7 Conclusion	24
Appendix A Site Layout Drawings.....	A-1
Appendix B Site Audit Questionnaire	B-1
Appendix C Cycle Network Map.....	C-1
Appendix D Luas Information	D-1
Appendix E Bus Timetables	E-1

Appendix F Commuter Train Timetables F-I
Appendix G GoCar Letter of Intent G-I

1 Executive Summary

This Residential Travel Plan (RTP) has been prepared by PUNCH Consulting Engineers on behalf of Emrajare Limited to accompany a planning application to Dublin City Council for a proposed development on Davitt Road, Drimnagh, Dublin 12.

The applicant recognises the need for all significant transport generators to play a role in meeting the objectives set out in the National Sustainable Mobility Policy and the Climate Action Plan 2023 which set out ambitious targets with respect to delivery of sustainable transport modes.

This RTP therefore outlines the provisions proposed to be put in place as a means of reducing car dependency associated with the development in the interest of compliance with the following sustainable transport initiatives:

The need to rebalance transport movement in our urban centres away from the private car and towards active travel and public transport by reallocating space and priority at junctions. The Policy is aligned with the Climate Action Plan to deliver at least 500,000 additional daily active travel and public transport journeys by 2030 and a 10% reduction in the number of kilometres driven by fossil fuelled cars.

The key RTP proposals being put forward in relation to the development are:

1. The proposals incorporate elements of the strategic vision of 'Chapter 8 - Sustainable Movement and Transport' from the Dublin City Council Development Plan, which is committed to the promotion of Smarter Travel mobility targets, through various measures outlined herein.
2. Cycling facilities have been prioritised. The applicant will encourage and provide information to residents to promote Smarter Travel mobility targets through various measures outlined herein.
3. This RTP sets out the key proposals for the development based on current transportation data for the development. The applicant has confirmed an unreserved adherence to the principles of Smarter Travel.
4. This RTP is to be considered an active document and may be amended and added to in the future to achieve the sustainable transport targets set. It is recommended that a Mobility Manager/Travel Coordinator is appointed to promote this RTP. Templates and checklists are provided with this RTP to assist in achieving the sustainable travel objectives set out therein.

2 Introduction

This Residential Travel Plan (RTP) has been prepared to accompany a Planning Application for a proposed development consisting of 113 no. apartments, 1 no. restaurant/bar/café unit (with a GFA of 225 sqm) and 1 no. retail unit (with a GFA of 80 sqm). The development includes the site of the former “Marble Arch” (public house), 1 Benbulbin Road, Dublin 12, D12 HC7F and adjoining site at Davitt Road, Dublin 12, D12 YXK8. It is located along the Grand Canal, and 150m from the Goldenbridge Luas Stop.

Users of the development will consist of residents as well as the public accessing the restaurant and retail units.

The site is well served by transport including Luas and Dublin Bus services. The development is also well served by pedestrian walkways and cycle paths.

The proposed works are outlined in a series of architectural drawings prepared and C+W O'Brien Architects and engineering drawings prepared by PUNCH, supplied as part of this planning submission.

2.1 Site Location

The total site area is approximately 0.295 Ha. The subject lands are currently brownfield and comprises a vacant pub and a number of industrial/commercial units and associated outbuildings. The site falls by approximately 1m from west to east. The site is located in the functional area of the Dublin City Development Plan (2022-2028).

The site is bounded to the north by Davitt Road and LUAS railway, to the east by vacant commercial units (with an associated planning grant ABP-309627-21), to the west by Benbulbin Road and to the south by residential properties. The access point for the proposed site is via Davitt Road.

The site is located approximately 4.0km from Dublin City Centre. The site location is shown in Figure 1 below.

The site location in relation to the wider road network is shown in Figure 1 below.

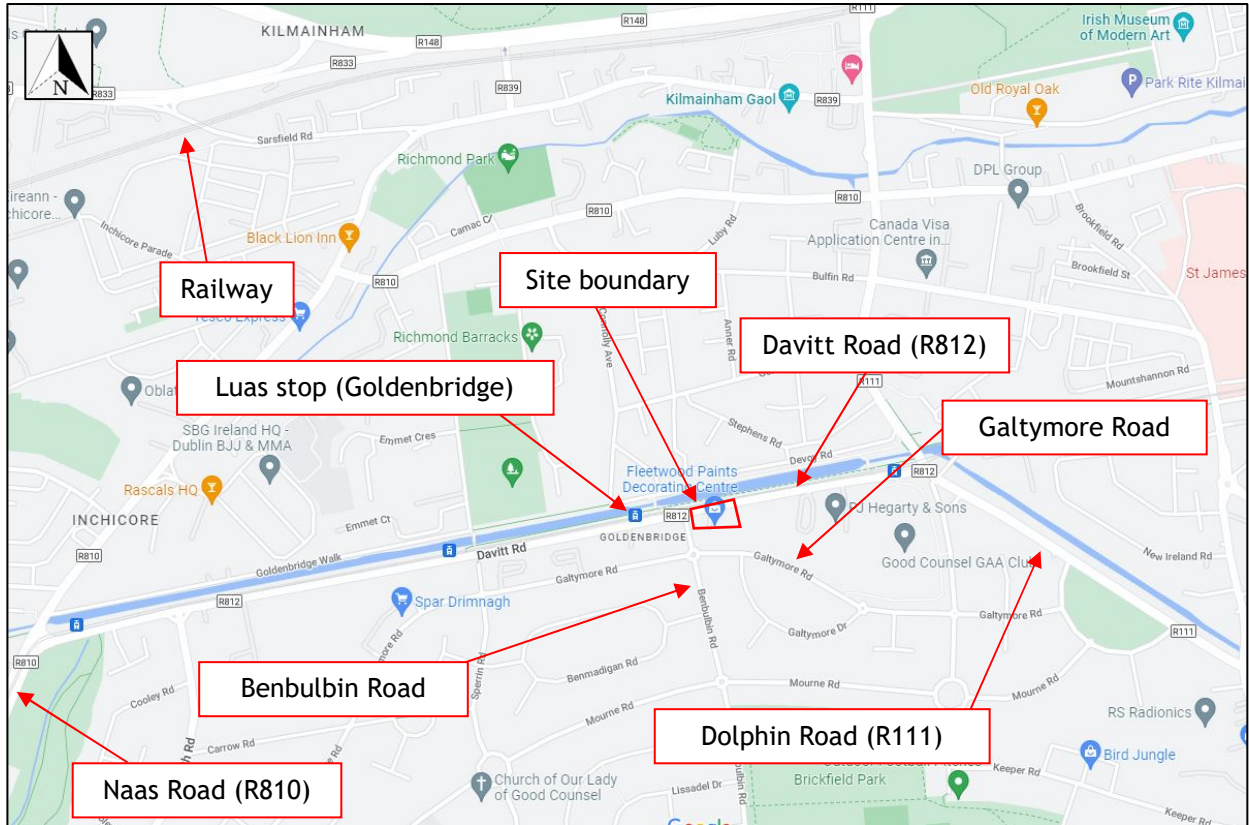


Figure 1: Location Map of the Site and Surrounding Road Network (Ref: Google Maps)

2.2 Objectives of the Plan

This Plan outlines the provisions that the applicant proposes to put in place as a means of promoting sustainable transport, active travel and reducing car dependency associated with the development, in the interest of compliance with the following sustainable transport initiatives:

- National Sustainable Mobility Policy
- Climate Action Plan 2023
- National Investment Framework for Transport in Ireland
- Sustainable and Compact Settlements Guidelines for Planning Authorities
- Sustainable Urban Housing: Design Standard for New Apartments
- The need to reduce transport emissions to meet EU greenhouse gas reduction targets.
- The need to reduce traffic congestion, particularly at peak commuting times.
- Transport Strategy for the Greater Dublin Area.
- Dublin City Development Plan 2022-2028 (Chapter 8).

We consider that a site-specific Residential Travel Plan can only be fully developed and implemented once the residents travel behaviour is known and when the development is occupied. This initial Residential Travel Plan sets out the key infrastructural proposals and modal split targets for the development in general terms.

The Residential Travel Plan can lead to benefits, such as offering substantial savings by suggesting alternatives to travelling from the residential development, primarily to and from work (other than by car), allowing commuters to avail of a healthier lifestyle by incorporating exercise into the daily commute and reducing stress experienced by residents caused by lack of alternatives in commuting to work.

The Residential Travel Plan specific to the nature and location of the development will consist of a package of sustainable measures aimed at increasing sustainable travel as well as details of existing sustainable travel options. These measures can include facilitating walking, cycling and car sharing schemes. Soft measures such as education, information and awareness can also be used.

The Residential Travel Plan can be developed once the development is fully occupied. The new development will cater for both vehicular and pedestrian traffic and includes provision of bicycle parking.

Measures laid out in the Residential Travel Plan will aim to reduce the number of people travelling to the development by car, promote the use of public transport and encourage users to use more sustainable methods of travelling. Please refer to Figure 2 for details of the nearby rail and bus stops in the vicinity of the proposed development site.

The RTP should be considered as a dynamic process where a package of measures and campaigns are identified, piloted and monitored on an ongoing basis. The nature of the plan therefore changes during its implementation in that some measures prove successful and are therefore retained while others are not supported and are discarded. It is important that the plan retains the support of users and receives continuous monitoring. Feedback and active management of the plan is required for it to continue to be successful.

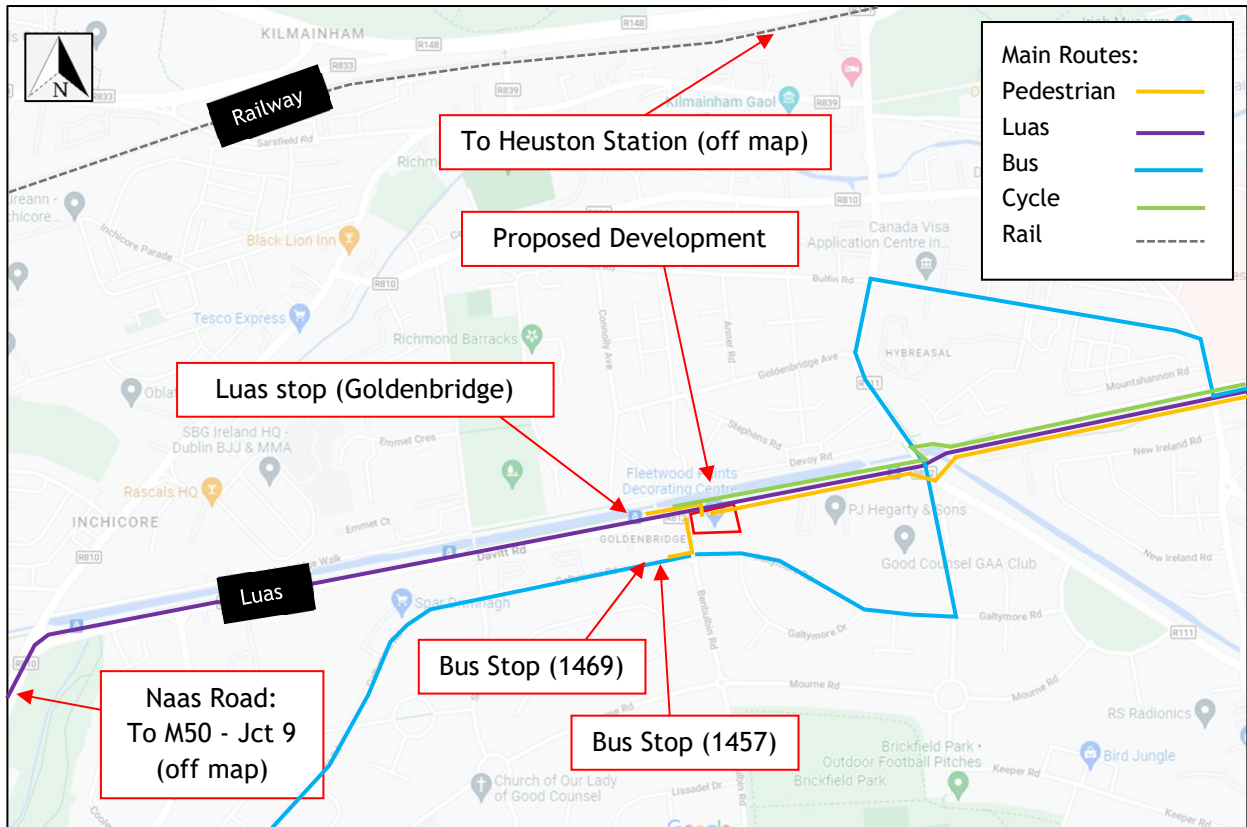


Figure 2: Location map showing nearby commuter options (Ref: Google Maps)

Table 1 below details the approximate distance and different times to travel for the main transport interchanges from the development site. Note that all distances are taken as the distance by car. Walking and cycling distances may be shorter. Additionally, all estimated times are taken 10 o'clock on a Friday.

Table 1: Approximate Transport times from the Proposed Development Site

Description	Distance	Car	Train	Bus	Cycle	Walking
	(km)					
Luas stop - Goldenbridge	0.15	-	-	-	-	2
Bus Stop (1457 / 1469)	0.15	-	-	-	-	2
Heuston Station	2.2	14	10	-	8	27
M50 (Junction 9)	4.1	12	-	-	-	-
Dublin City Centre (St Stephen's Green)	4.0	24	37*	28	15	47

2.3 Census Data

The existing mode share by trip purpose, was obtained from 2022 CSO census data, Small Area Population Statistics (SAPS) data and Small Area Population Maps (SAPMAP).

It is noted that the 3 No. Small Areas close to the subject site cumulatively display the following modal split:

- 33.1% commute by private car
- 24.1% commute by bus, train or LUAS
- 26.5% cycling or walking

Small Area 268152001 consists of the Grand Canal View Apartment development and is perhaps the most analogous to the proposed Marble Arch residential development. This area displays the following modal split:

- 23.6% commute by private car
- 29.8% commute by bus, train or LUAS
- 28.9% cycling or walking

Therefore, the proposed provision of parking facilities at the Marble Arch development is considered sustainable and balanced in terms of adequate provision of parking and promotion of more sustainable transport options.

The 3 no. Small Areas (outlined in figure below) consist of the following designations per the 2022 Census Mapping:

- A268052008
- A268051009
- A268152001

The areas being represented by the data is shown outlined in red in Figure 3.



Figure 3: Central Statistics Office - Census 202 Small Area Map (Ref: CSO)

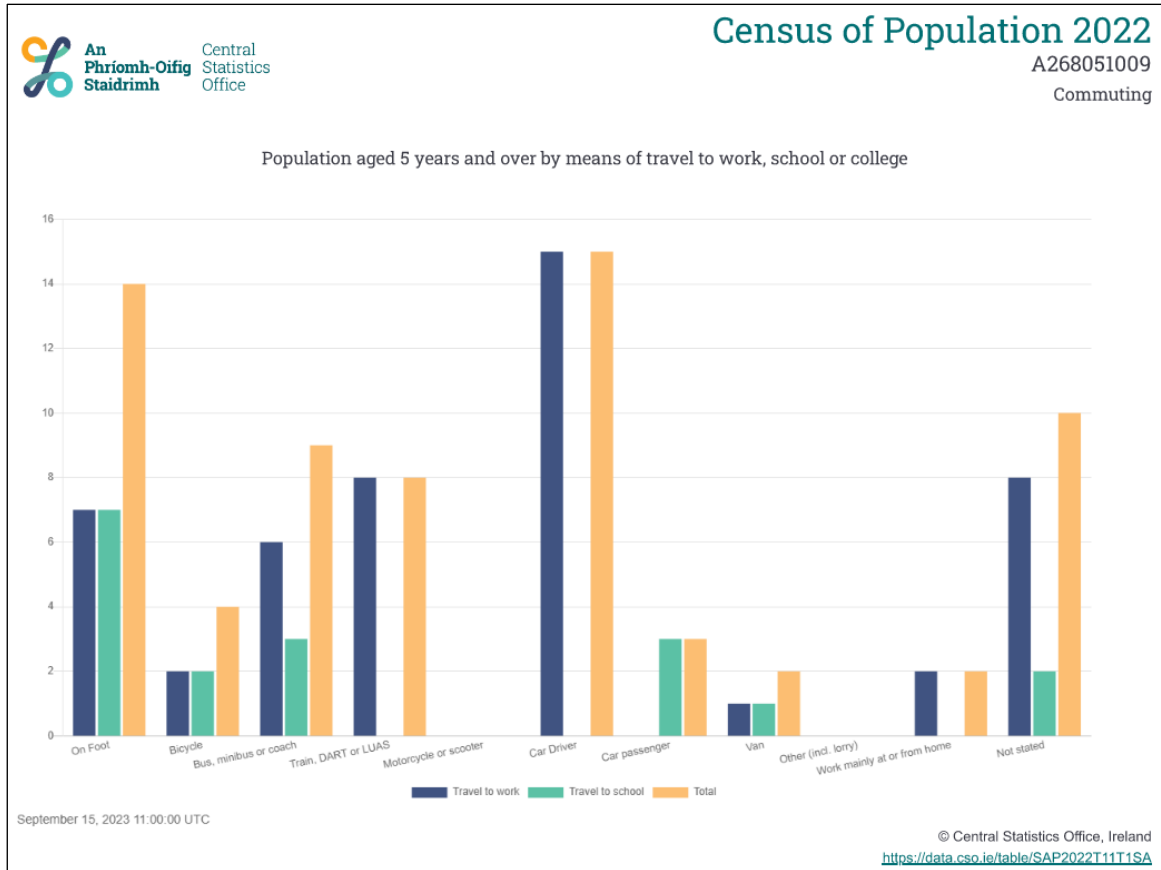


Figure 4: A268051009 Commuting Census Graphic (Source: Central Statistics Office)

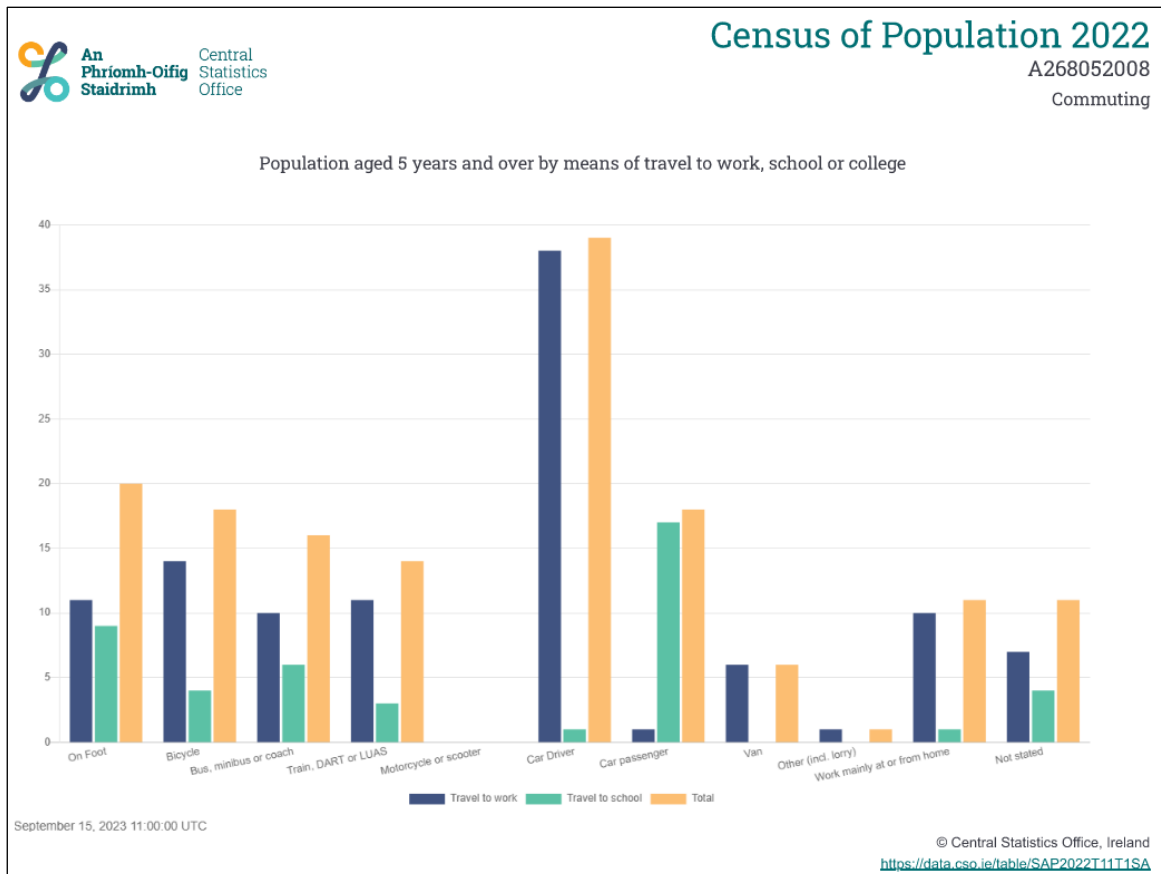


Figure 5: A268052008 Commuting Census Graphic (Source: Central Statistics Office)

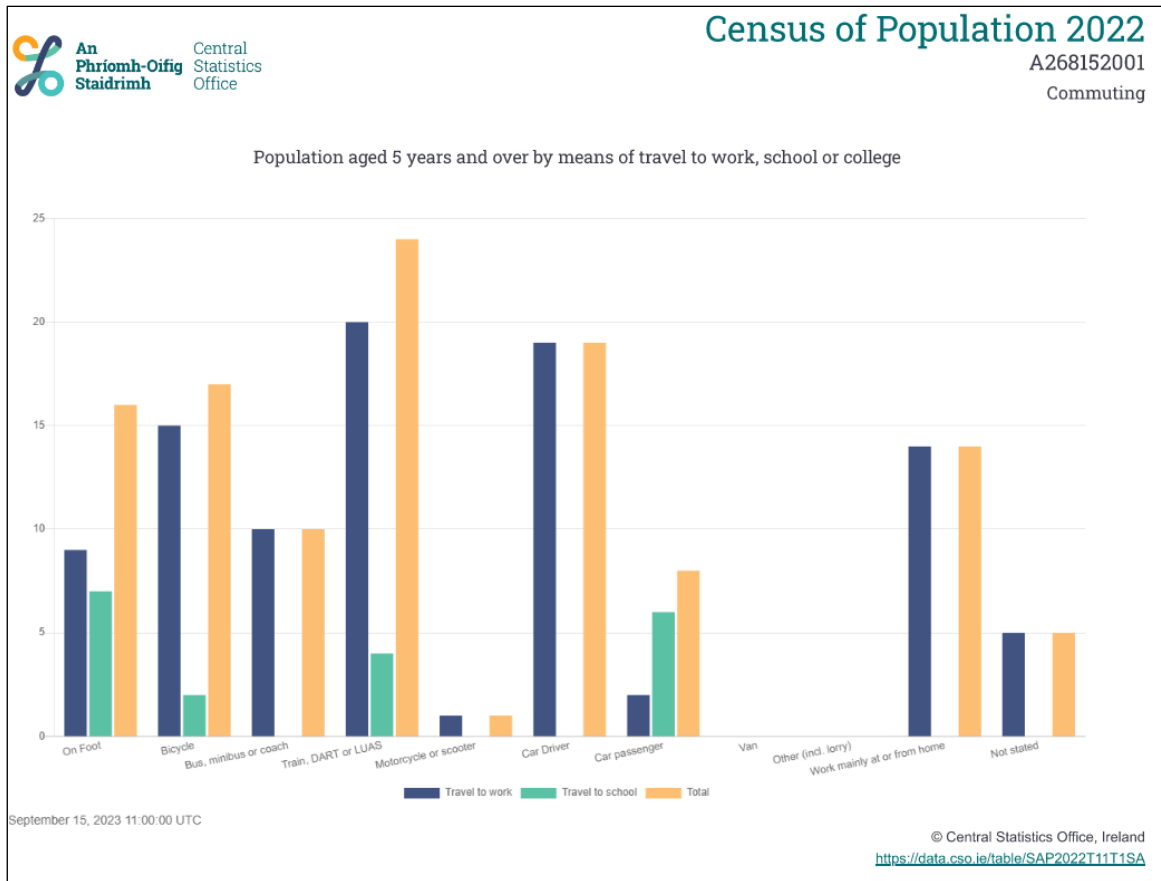


Figure 6: A268152001 Commuting Census Graphic (Source: Central Statistics Office)

The development site has the potential for an increased use of walking, cycling and public transport. The Luas is in close proximity to the site along with bus, cycling and walking facilities which are outlined in the following chapters.

A Mobility Manager or Travel Officer will be appointed to the operating development as recommended in this report.

3 Site Conditions

This section gives an overview of the accessibility of the options for travel associated with the development.

3.1 Site Access

Vehicular access to the development is via Davitt Road, which has a 50 km/hr speed limit.

3.2 Parking

Car parking serving the Marble Arch Site development is provided predominantly at basement level. Car parking spaces will be provided at this location as follows:

- 26 No. car parking spaces are provided consisting of the following:
 - 2 no. Accessible Parking Spaces
 - 3 no. parking spaces dedicated for car club use only (one at-grade and two in basement)
 - 22 no. parking spaces dedicated for residential car storage
 - 1 No. parking space is provided to service/delivery/drop-off within the basement.
- 3 No. motorcycle parking spaces are provided.
- No dedicated car parking facilities are proposed for the Restaurant/Café or Retail components.

It is further noted that a service lay-by is also provided at-grade on Benbulbin Road.

In accordance with the Dublin City Development Plan Requirements provision has been made for:

- Disabled car parking (5% of spaces minimum)
- Motorcycle parking (1 for every 20 car parking spaces)
- EV Charging parking (a minimum of 50% of all car parking spaces shall be equipped with fully functional EV Charging Point)
- Cycle parking

The following section outlines the proposed vehicular and cycle parking quantum associated with the new development designed to facilitate and encourage a positive modal shift at the development towards alternative sustainable modes of transport.

The general objectives are as follows:

1. Reduce and discourage the reliance on the use of private car travel.
2. Increase and facilitate the use of alternative sustainable forms of transport such as walking, cycling or traveling by public transport to/from the development.
3. Develop an integrated and unified approach to traffic management for the site which will include public transport, private vehicles, cycle facilities and car sharing services.
4. Engage with Local County Council, the National Transport Authority (NTA), Irish Rail, Dublin Bus, Transport Infrastructure Ireland, Transdev, Bus Éireann and all other relevant stakeholders in a partnership model to promote an increased uptake in public transport.

It is an objective of this plan to limit the level of parking available on-site wherever possible in order to minimise and discourage dependency on private car travel. This will also continue to take into consideration the necessary demand to prevent overspill parking issues in nearby locations.

The Dublin City Development Plan, Appendix 5, Section 2.3 states the following:

“Where a zero or reduced quantum of car parking is proposed for a residential development, a proactive mobility management strategy is essential at the early design stages to identify measures that will promote the use of sustainable modes within the development and ensure

any associated infrastructure can be incorporated into the design. A Residential Travel Plan will be required to support the zero/reduced provision of car parking to serve a development.”

The Dublin City Development Plan, Appendix 5, Section 2.5 states the following:

“The maximum standards for car parking provision are set out in Table 2. Dublin City Council proactively works with developers to develop appropriate mobility strategies for new developments, including appropriate parking ratios. Car parking ratios for new developments are dependent on a number of factors in order to deliver a sustainable community. In particular locations, active travel (walking and cycling) infrastructure and provisions to support active travel modes and access to operational high frequency public transport corridors within 10 minutes walking distances are all key components for reduced car parking provision. Other applicable factors include access to services and amenities located within walking distance, high quality shared mobility provision, and service vehicles access and strategy which all seek to minimise the impact on the public transport corridors and other users of the surrounding road network.”

Furthermore, the ‘Sustainable Urban Housing: Design Standards for New Apartments’ (July 2023), Section 4.21 states the following:

“In larger scale and higher density developments, comprising wholly of apartments in more central locations that are well served by public transport, the default policy is for car parking provision to be minimised, substantially reduced or wholly eliminated in certain circumstances. The policies above would be particularly applicable in highly accessible areas such as in or adjoining city cores or at a confluence of public transport systems such as rail and bus stations located in close proximity.”

The ‘Sustainable Urban Housing: Design Standards for New Apartments’ (July 2023) defines three categories of locations. In the case of the proposed development at the Marble Arch site, Davitt Road, the location can be accurately identified as an ‘Accessible Urban (or Intermediate) Location’, and defined as follows...:

“Such locations are generally suitable for small- to large-scale (will vary subject to location) and higher density development (will also vary), that may wholly comprise apartments, including:

- *Sites within walking distance (i.e. up to 15 minutes or 1,000-1,500m), of principal city centres, or significant employment locations, that may include hospitals and third-level institutions;*
- *Sites within reasonable walking distance (i.e. up to 10 minutes or 800-1,000m) to/from high capacity urban public transport stops (such as DART or Luas); and*
- *Sites within easy walking distance (i.e. up to 5 minutes or 400-500m) to/from high frequency (i.e. min 10 minute peak hour frequency) urban bus services.”*

The conclusion that the site can be defined as a central accessible site is demonstrated by its location 4.0km from the city centre, ease of access to the Luas Red Line and the availability of the high frequency bus routes. Another defining aspect is its proximity to large employment areas such as Dublin City Centre, St James Hospital, the Coombe Hospital, Park West Industrial Estate, John F Kennedy Industrial Estate. These would be key employment locations and people can easily walk, cycle or take public transport to them from the site.

3.2.1 Car Parking

Please see Table 2 below for summary of the maximum permissible residential car parking quantum as defined by requirements outlined in the Dublin City Development Plan 2022-2028 (Appendix 5, Section 4.0, Table 2):

Table 2: Dublin City Development Plan Parking Standards

Development Type	Units / GFA	Car Parking Standards	Maximum Car Parking Quantum
Accommodation - Apartments	113 Units	1 per dwelling (Zone 2)	113
Restaurant/Café	225m ²	1 per 150m ² seating area	1
Retail	80m ²	1 per 300m ²	1
Total	-	-	115

No dedicated car parking facilities are proposed for the Restaurant/Café or Retail components.

In the case of the proposed residential component of the development, the **maximum** DCC parking requirements equate to 1 car parking spaces per unit (i.e. 113/113).

It is proposed to provide 25 No. residential car parking spaces for the 113 no. units, equating to 0.22 car spaces per unit.

In response to the DCC Opinion, 1 No. parking space is also provided to service/delivery/drop-off within the basement.

A service lay-by is also provided at-grade on Benbulbin Road.

In response to the DCC Opinion, 3 no. parking spaces dedicated for car club use only are proposed for inclusion in this car space provision (two in basement and one car sharing space at-grade on Benbulbin Road). Please note that GoCar have advised that 1 No. GoCar vehicle can replace up to 15 private cars. Applying this rationale results in an 'equivalent provision' of $22 + (3 \times 15) = 67$ no. private car spaces.

This 'equivalent' level of provision equates to 0.6 car parking spaces per residential unit (i.e. 67/113).

This parking provision should be viewed in relation to the New Apartment Guidelines as advised above. Therefore, the proposed provision of parking facilities is considered sustainable and balanced in terms of adequate provision of parking and promotion of more sustainable transport options.

2 no. parking spaces (7.7% of the total number of spaces) will be designated disabled user car-parking spaces. The disabled spaces are to be demarcated with yellow lines, a protected hatched area and appropriate road markings to identify these spaces. The proposed location of the disabled parking spaces will be in close proximity to the building entrances.

3 no. motorcycle parking spaces (11.5% of the total number of car parking spaces) will be designated.

13 no. Electric Vehicle Charging Points (EVCP) will be provided far in excess of the Dublin City Development Plan standards i.e. 50%.

As outlined in Section 3.10 below, it is currently proposed to provide a total of 367 no. cycle parking spaces (including 5 no. cargo bike spaces). The cycle parking facilities and their utilisation will be monitored to determine actual vs forecast demands and amendments to the cycle parking arrangements will be actioned as required as part of the on-going mobility management strategy for the development.

3.2.2 Electric Vehicle Charging Points

In accordance with the Development Plan requesting provision of “a minimum of 50% of all car parking spaces shall be equipped with fully functional EV Charging Point”, a total of 13 no. parking spaces within the basement will be equipped with one fully functional Electric Vehicle Charging Point.

3.2.3 Motorcycle Parking Provision

The Dublin City Development Plan Appendix 5, Section 6.0 requires developments to provide motorcycle parking spaces at a minimum of 1 no. spaces per 20 car parking spaces.

Motorcycle parking is proposed at basement level with a total of 3 no. motorcycle parking spaces provided. This represents 11.5% of the overall car parking spaces (3/26) and therefore satisfies the required minimum 5% provision.

3.3 Pedestrians

There are pedestrian entrances for the site via the Davitt Road and Benbulbin Road. The pedestrian access point has designated footpaths leading to it on both the outside and inside of the site. There is an existing footpath running along Davitt Road and Benbulbin Road which is free from street clutter.

There was no evidence of flooding/ponding in the areas. The pedestrian route is well lit and drop kerbs are provided where necessary.

Pedestrians will be catered for throughout the proposed development. Refer to the C+W O'Brien Architect's drawing for further detail.

3.4 Cycling

Access to the development is a shared surface for cyclists and vehicles. It is proposed to provide 367 bicycle parking spaces on site that are located at-grade and at basement level. The basement bicycle parking areas are well lit, secure and accessed via a dedicated cycle route facility. The at-grade cycle parking areas are similarly well lit and protected through passive surveillance.

3.5 Public Transport

3.5.1 Bus Services - Local

The development is served by Dublin Bus stop 1469 and stop 1457 which links Walkinstown, Dublin City Centre and Marino. The stop is located approximately 0.15km from the site. The route operates approximately every 12 minutes from 08:28 AM-16:04 PM from Monday-Friday.

In order to facilitate the use of public transport consideration will be made to provide information on location of stops, routes, timetables, walking times to main public transport facilities, etc. Also to advise residents of the availability of the national Tax saver Scheme refer to Transport for Ireland web site (<https://www.transportforireland.ie/fares/taxsaver/>) for more details. High frequency public transport is available in the area of the development, as described below and shown in Figure 7.

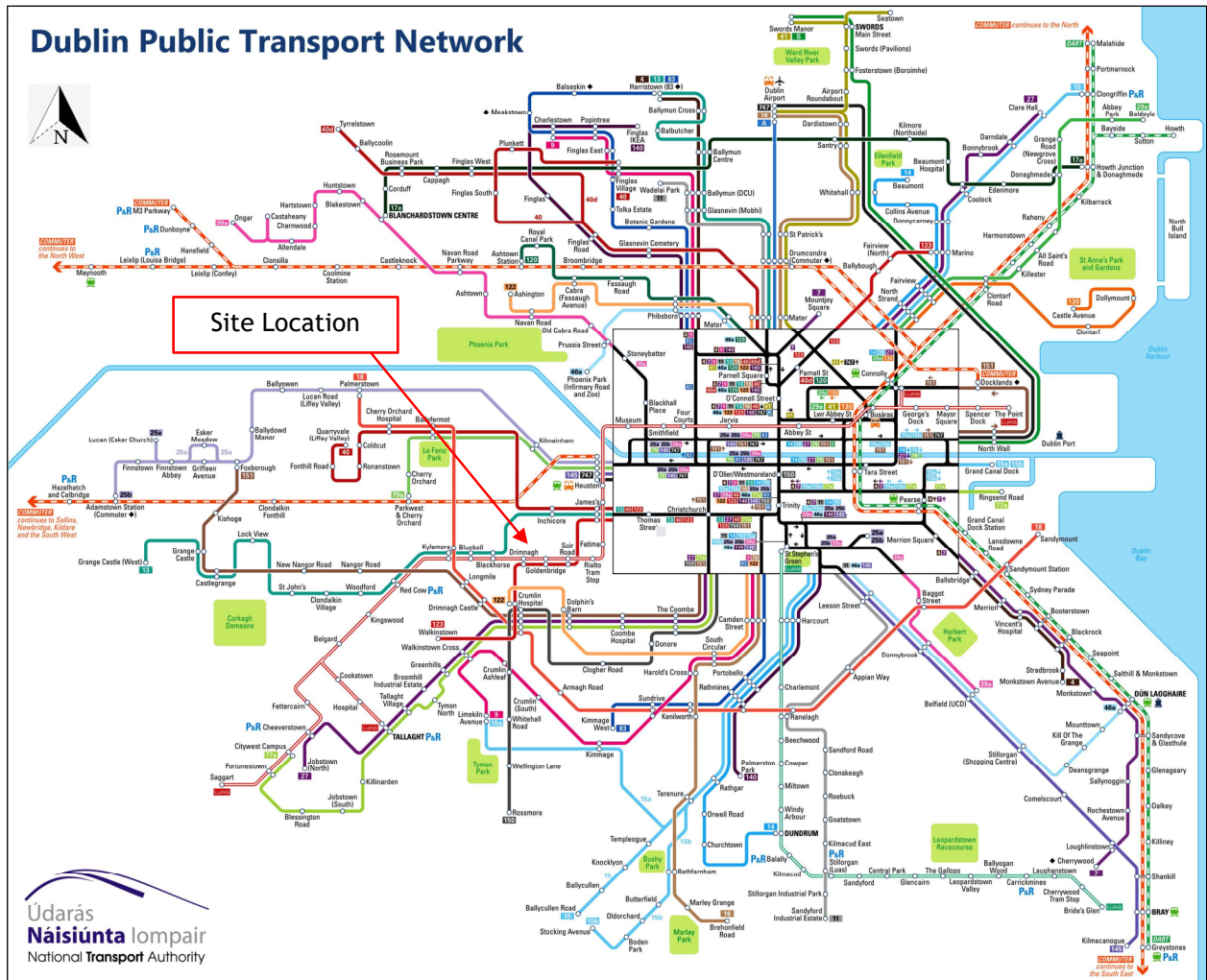


Figure 7: Dublin Public Transport Network (Ref: National Transport Authority)

Please refer to Appendix E for bus timetables.

Transport for Ireland provide a phone App and a useful website called 'Journey Planner' this can be used to easily plan routes to and from the development using bus routes and other forms of Transport. It is available as a free download and is highly recommended.

Refer to Figure 2 for location of nearby P&R bus stops.

3.5.2 Luas Services

The site is located 0.14km from Goldenbridge Luas stop (2-minute walk). This will allow residents easy, quick and reliable transport east and west bound to locations on the route. The Luas services provide access to regional transportation rail connections for travellers across Ireland. Recently the green line has been connected to the red line, providing a service directly to Conolly Station and Heuston Station.

There are regular commuter train services between Conolly Station and Heuston Station and key surrounding areas, as follows:

- Dublin - Sligo
- Dublin - Rosslare Europort
- Dublin - Belfast
- Bray - Dublin - Dundalk
- Dublin - Maynooth/Longford/M3 Parkway

Please refer to Appendix D for luas information and Appendix F for commuter train timetables.

Leap cards can be purchased which can reduce fares by an average of 20% across all Transport for Ireland services. Transport for Ireland also has a free Leap card phone application for download which allows you to top up your leap card and view previous journeys and fares.

3.5.3 Train Services

The closest train station is Heuston Station which is located to the north of the site. There is a regular train service linking Dublin to Cork, Galway, Limerick, Westport and Waterford. The station is located approximately 2.2km from the development.

3.5.4 Taxi Services

There is a constant flow of taxis along (nearby roads) collecting and depositing passengers. This will facilitate taxi use by providing a safe and convenient means of accessing this form of transport. The objective is to encourage lift sharing in taxis to help reduce the demand on parking and congestion at peak times.

3.6 Transport Services

3.6.1 Car Club - Shared Cars

Car clubs are being widely used as a way of reducing the need for private car ownership. Communal cars are currently available at various locations throughout Dublin City. Motorists can book slots using an online phone application. Cars are rented per hour with fuel, tax and insurance all included in the hire price.

This scheme is proposed to be utilised within the development to reduce the need for individual car ownership. It is proposed to include 3 no. shared cars for the development for the use of the residents. Subject to the demands of the residents this could be reviewed and increased in the future.

At this time, it is proposed to use the scheme operated by GoCar but an equivalent shared car scheme could be used.

A letter of intent has been obtained from GoCar and is appended to this Residential Travel Plan. It states that GoCar intends to provide 3 no. shared car club vehicles within the proposed development. Each vehicle has the potential to replace the journeys of up to 15 private cars.

3.6.2 Car Sharing

In order to reduce car usage consideration for car sharing would include:

1. Maintain an on-line database or a register including travel and contact details.
2. Implement and foster a Car Sharing Programme.
3. Match residents for car sharing and aim to match work schedules based on car sharing needs.
4. Reserve preferential parking for participating cars.

The Mobility Manager would be the point of contact for parking issues.

3.7 Potential for Pedestrians trips

The proposed development is located in Dublin City where there is a high potential for pedestrian trips to and from the development. It is thus important that the development is properly integrated into the existing footpath network. There are footpaths already along Davitt Road, and on surrounding roads.

The development is in close proximity to a number of schools as shown in Figure 8. It is located in close proximity to a number of employment centres such as St James's Hospital (1.0km), and CHI at Crumlin (1.5km). It is also located in close proximity to numerous retail facilities in Dublin City Centre.

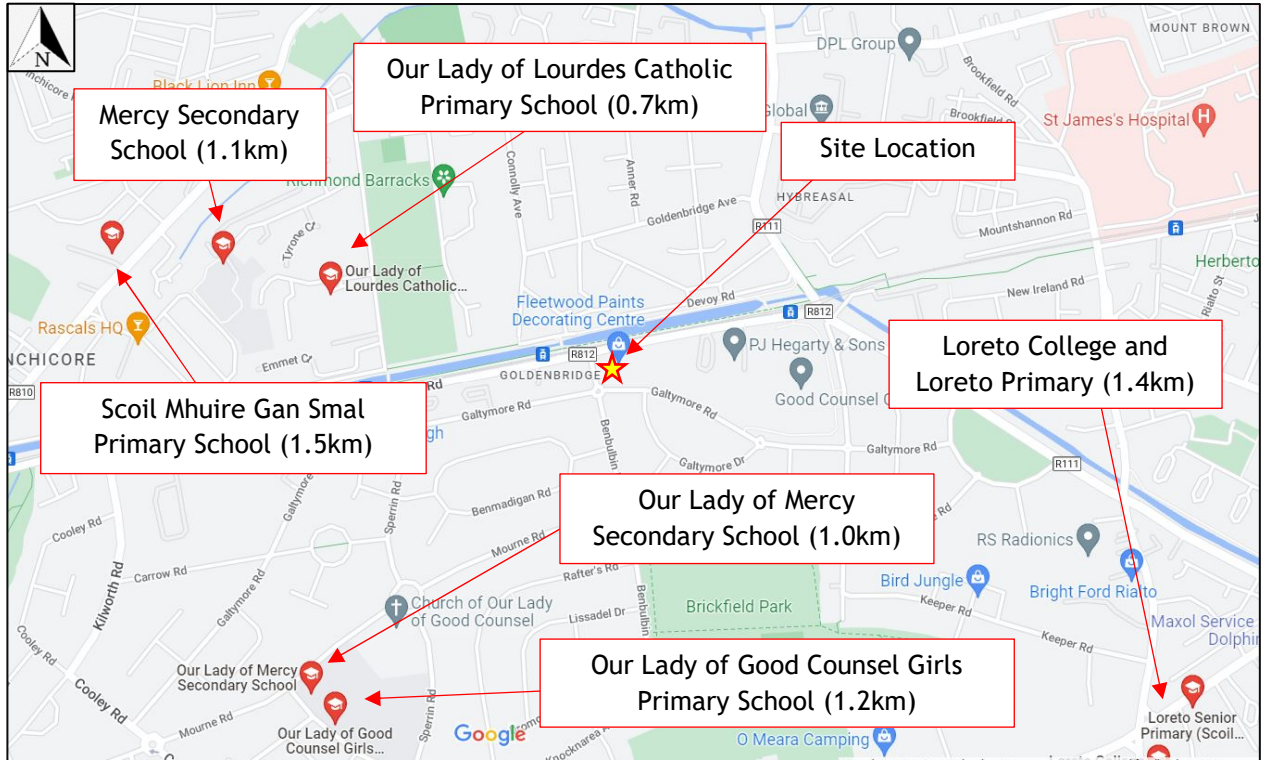


Figure 8: Site location in relation to local schools with approximate distances (Ref: Google Maps)

3.8 Cycle Parking

Cycling is to be significantly encouraged as part of the development. A total of 367 no. cycle parking spaces will be provided within the proposed development.

The cycle parking requirements of the Dublin City Development Plan (2022-2028) are summarized below:

Table 3: Cycle Parking Requirements in accordance with the ‘Dublin City Development Plan (2022-2028)’

Development Type	Units / GFA	Long Term	Visitor	Long Term	Visitor
Accommodation - Apartments	113	1 per bedroom	1 per two apartments	170	57
Restaurant/Café	225m ²	1 per 5 Staff	1 per 10 seats	2	8
Retail	80m ²	1 per 5 Staff	1 per 100m ²	1	1
Total Cycle Parking				173	66

In the case of the proposed Marble Arch Davitt Road development, we are proposing cycle parking numbers as follows:

Table 4: Proposed Cycle Parking Quantum for the Marble Arch Davitt Road Development

	Residential			Commercial	
	Long Term Cycle Parking	Short Term Cycle Parking	Cargo Bike Spaces	Restaurant/Café	Retail
Total	290	60	5	10	2

It is proposed to provide a total of 367 no. cycle parking spaces (including 5 no. cargo bike spaces) at the proposed development site:

- 32 no. at-grade cycle parking spaces
- 330 no. basement cycle parking spaces

Please refer to C+W O.Brien Architects layout for locations, layout and number of spaces provided.

It is anticipated that cycle parking will be monitored and addressed more fully as part of considerations of the Residential Travel Plan, with potential for additional spaces if required in the future.

The development is located at a reasonable distance from the city centre (circa 4.0km away), which means that the trip to commute from Dublin City centre to the proposed development is approximately 15 minutes. The city centre and local region has many cycle lanes and designated paths for the use of cyclists along with proposed development plans to provide more throughout the city.

There are large-scale existing cycle networks as shown in the Cycle Network Plan for the Greater Dublin Area. It is noted that there are dedicated existing bicycle lanes running along Davitt Road to the north of the development facilitating the use of this sustainable form of transport to and from the city centre and surrounding areas.

See Figure 9 below for excerpts and Appendix C for a copy of the full map.

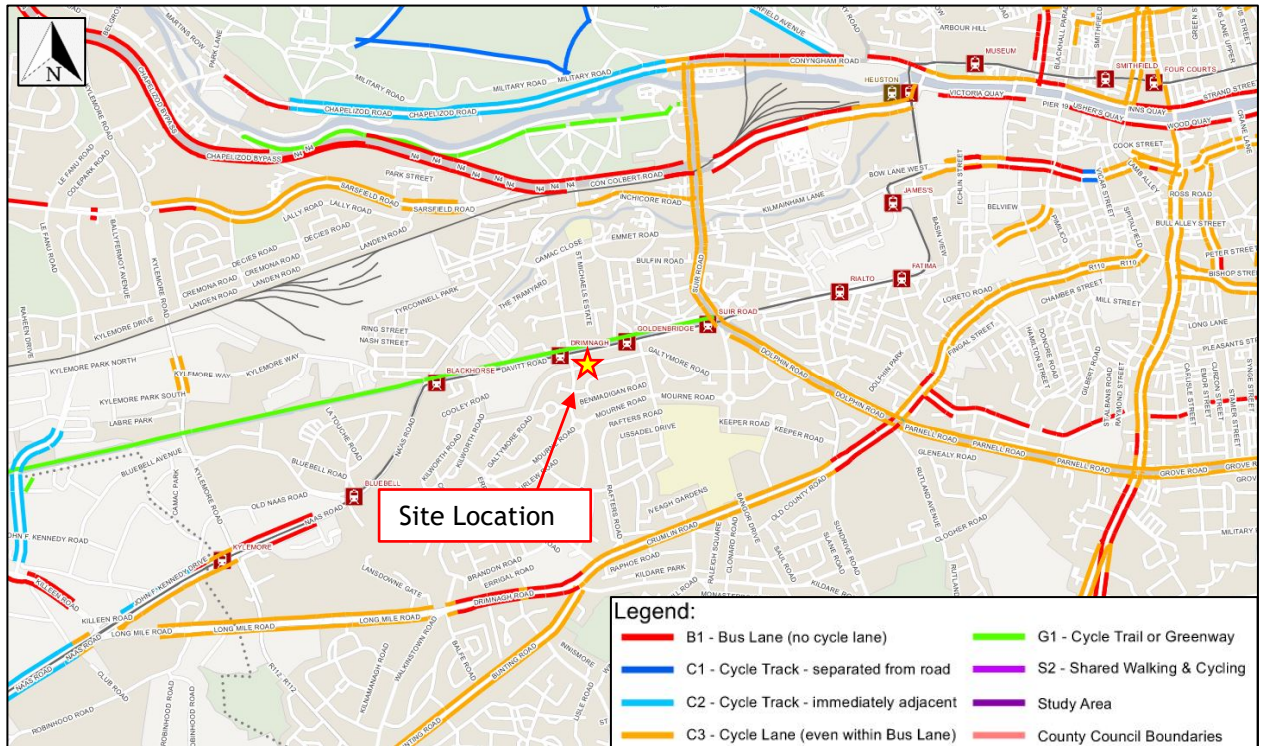


Figure 9: Detail from Existing Cycle Network (Ref: Cycle Network Plan for the Greater Dublin Area)

4 Consultation

The RTP is a document that evolves over time and requires ongoing implementation, management and monitoring, and for successful implementation requires organisational support, Mobility Manager, an internal Travel Co-ordinator and financial resourcing.

To implement the RTP the following inputs are required:

- Initial support and commitment from the residents and employees
- A Mobility Manager / Travel Co-ordinator as the overall RTP coordinator and point of contact
- A Steering Group to oversee the plan
- Working groups on various related issues

This Plan outlines the range of measures which are proposed to reduce car dependency associated with this development. The key proposals being put forward by the applicant are:

- Pedestrian and cycling facilities have been prioritised
- The developer will encourage and provide information to staff that they are required to individually and co-operatively promote the achievement of Smarter Travel mobility targets through various measures outlined herein.

To ensure effective results from any initial sustainable travel investment it is imperative to obtain the agreement of all the stakeholders and obtain the support of external partners such as the Local Authority, public transport operators, etc. Ideally the RTP will be managed by a Mobility Manager or Travel Coordinator with the clear mandate to implement and evolve the plan.

Due to the location of the development and the alternative transport modes available, the historic reliance on the car can be challenged. The issuance of welcome packs to the residents and staff, containing e.g. timetables of public transport and details of nearby facilities can be considered.

The document: National Transport Authority Workplace Travel Plans - A Guide for Implementers may be used as a reference. There is also an UK document: Making Residential Travel Plans Work: Guidelines for new development published by the UK Department of Transport 2005 which is relevant.

The Mobility Manager or Travel Coordinator will also be best suited to monitor the results of the plan. Travel surveys should be carried out annually to monitor the initial success of the RTP and to gain a better understanding of the development user travel habits. These survey results can also serve as a sustainable travel performance benchmark to indicate how the RTP is performing in comparison to previous years and the sustainable travel targets initially outlined in the plan.

5 Action Plan

A non-exhaustive list of actions recommended to change the mode share and achieve Smarter Travel targets is given below with target completion dates and personnel responsible listed. Other actions may arise as the Action Plan implementation progresses. It is recommended that the developer should set up an Action Plan Working Group and assign a person to the role of Mobility Manager to assist with the implementation and running of Action Plan initiatives.

A sample Action Plan matrix is included below:

Table 5: Action Plan Recommendations

Action	Responsibility	Timeline
Create an Action Plan Working Group	XXXXXX	20XX
Appoint Mobility Manager	XXXXXX	20XX
Walking		
Soft Measures		
Provide incentives to encourage walking to/from the developer eg. provide umbrellas, free fluorescent gear, pedometers etc.	XXXXXX	20XX
Encourage establishment of a walking club or walking events	XXXXXX	20XX
Hard Measures		
Liaise with Local authority to improve pedestrian facilities to the site	XXXXXX	20XX
Maintain showers, changing facilities, lockers, drying room	XXXXXX	20XX
Cycling		
Soft Measures		
Promote the Cycle to Work scheme	XXXXXX	20XX
Encourage the establishment of a bicycle users group, online cycling forum or cycling events	XXXXXX	20XX
Provide incentives to encourage cycling to/from the depot eg. puncture repair kits, free fluorescent gear etc.	XXXXXX	20XX
Carry out a follow up site audit and survey staff/residents to gauge ease of access, use of facilities and possible improvements	XXXXXX	20XX
Hard Measures		
Maintain showers, changing facilities, lockers, drying room	XXXXXX	20XX
Liaise with Local authority to improve cycling facilities to the site	XXXXXX	20XX
Provide additional secure bike parking	XXXXXX	20XX
Public Transport		
Soft Measures		
Display map and timetables of public transport routes/ stops on intranet or in main reception area	XXXXXX	20XX
Hard Measures		
Liaise with bus service operators to increase existing service if necessary	XXXXXX	20XX
Carpooling		
Soft Measures		
Set up a private car sharing scheme for staff/residents	XXXXXX	20XX
Hard Measures		
Allocate staff/residents car sharing spaces in a priority location closest to the building	XXXXXX	20XX

Others		
Include travel options and Smarter Travel information in employee/residents. induction packs	XXXXXX	20XX
Provide a central information point (on intranet or in main reception area) with details of cycling and pedestrian routes, bus timetables, car sharing information, tax saver schemes for staff etc.	XXXXXX	20XX
Introduce a policy for the user-friendly shower and changing facilities as the demand increases.	XXXXXX	20XX
Carry out a follow up site audit and survey staff/residents to monitor and review travel patterns and adjust action plan accordingly	XXXXXX	20XX
Identify employees who could work from home or telecommute	XXXXXX	20XX

6 Monitoring and Review

The success of a RTP is its ability to deliver the ambitious targets set. The plan must be monitored to assess the level of compliance and then reviewed and altered depending on what measures prove successful or unsuccessful.

To ensure that the action plan and targets are achieved or to adjust these targets, residential travel patterns need to be monitored and reviewed. It is recommended that monitoring and reviews are carried out on the first, third and fifth anniversaries of the submission of this report.

The proposed method of revising the actions set out in this RTP has been summarised below with target completion dates and personnel responsible listed (where known).

A sample Measures Programme is included below:

Table 6: Quantitative Monitoring Programme

Measure Taken	To be completed in?	Review Date proposed for RTP	Who is Responsible?
Appoint Mobility Manager	1 Year	XX/XX/20XX	XXXXXX
Conduct Monitoring Travel Survey and Complete Monitoring Report	1 Year	XX/XX/20XX	XXXXXX

A sample Qualitative Monitoring Programme matrix is included below:

Table 7: Quantitative Monitoring

Quantitative Monitoring	To be completed in?	Review Date proposed for WTP	Who is Responsible?
Assessment of bicycle parking facilities (% available, condition etc.)	Summer months (when uptake is high)	XX/XX/20XX	XXXXXX
Assessment of changing facilities (demand, condition etc.)	Summer months (when uptake is high)	XX/XX/20XX	XXXXXX
Maintenance of user-friendly showering facilities	Ongoing	XX/XX/20XX	XXXXXX
Attitudes of staff towards sustainable transport	Bi-annually	XX/XX/20XX	XXXXXX
Staff satisfaction with facilities, company engagement	Ongoing	XX/XX/20XX	XXXXXX
Business acknowledgement of staff efforts (awards, incentives etc.)	Ongoing	XX/XX/20XX	XXXXXX

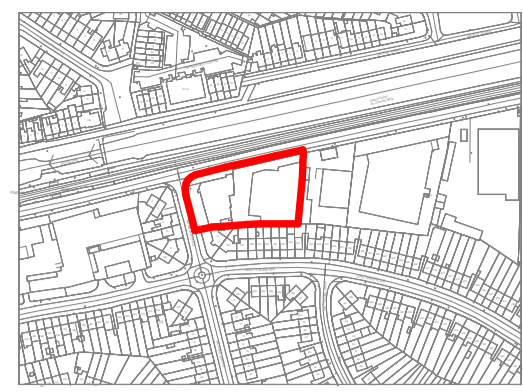
7 Conclusion

The findings of the baseline survey indicate that there is scope for further increased uptake of sustainable modes of transport by residents if the measures outlined in the Residential Travel Plan Action Plan are implemented. The site is well served by public transport and pedestrian/cycling facilities and the inclusion of go-car would bring a further reduction in the reliance on private car ownership.

This Plan outlines the provisions that the applicant, proposes to put in place as a means of promoting sustainable transport and reducing car dependency associated with the development. The key proposals being put forward by the applicant are:

- Provide and prioritise pedestrian and cycling facilities including bicycle parking.
- Promote the use of public transport
- Promote car sharing scheme for staff
- The applicant undertakes to promote the achievement of Smarter Travel mobility targets in the following measures:
 - Appoint a Mobility Manager in accordance with the National Transport Authority Workplace Travel Plans - A Guide for Implementers
 - Provide a briefing to all staff on Smarter Travel
 - Implement and further develop the Residential Travel Plan for staff in accordance with the National Transport Authority Workplace Travel Plans - A Guide for Implementers
 - Monitor and review the Residential Travel Plan to achieve the Smarter Travel targets

Appendix A Site Layout Drawings



Key Plan
1 : 5000

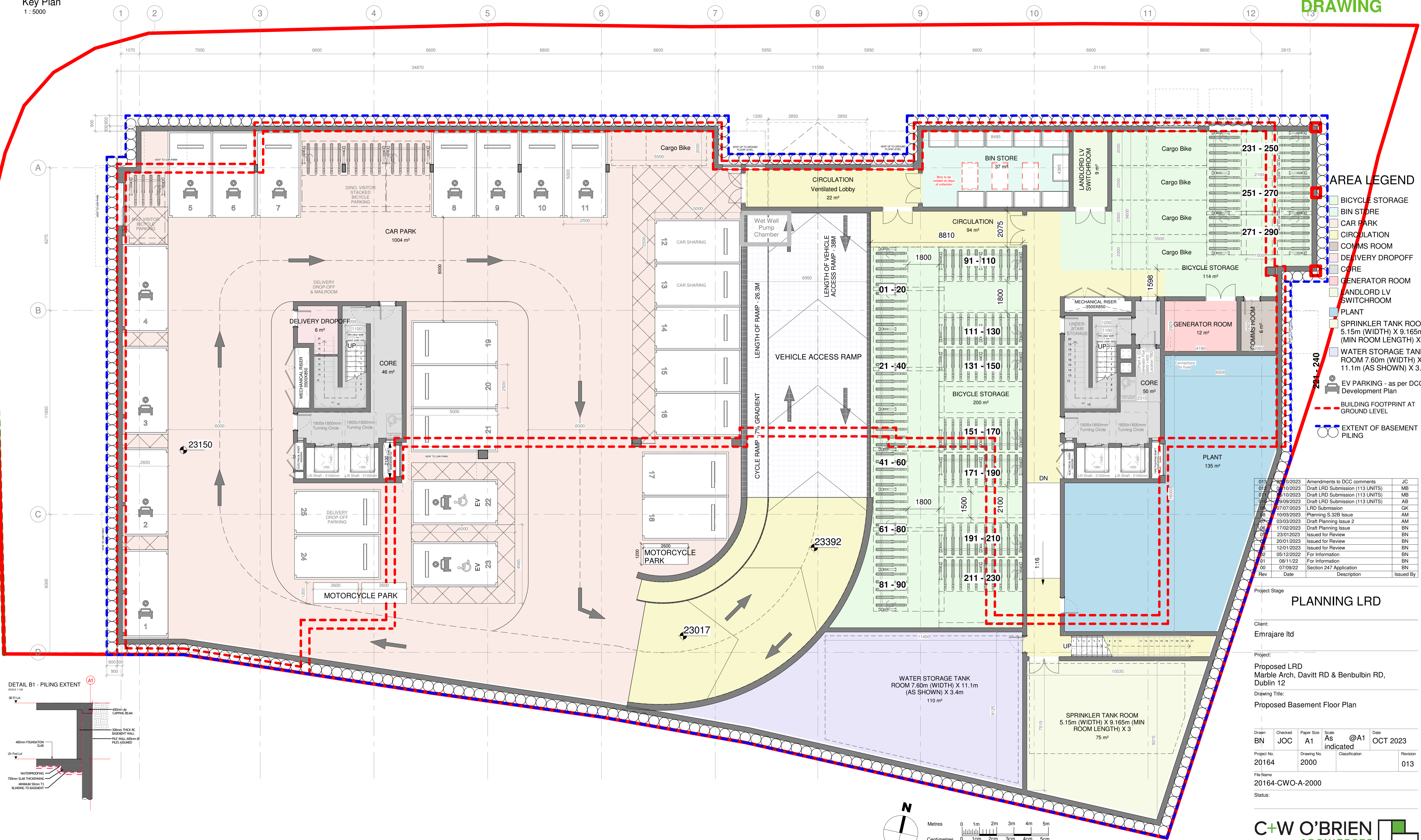
THE COPYRIGHT OF THIS DRAWING IS VESTED WITH CW O'BRIEN ARCHITECTS LIMITED AND MUST NOT BE COPIED OR REPRODUCED WITHOUT THE CONSENT OF THE COMPANY.

FIGURED DIMENSIONS ONLY TO BE TAKEN FROM THIS DRAWING. DO NOT SCALE.

ALL CONTRACTORS MUST VISIT THE SITE AND BE RESPONSIBLE FOR CHECKING ALL SETTING OUT DIMENSIONS AND NOTIFYING THE ARCHITECT OF ANY DISCREPANCIES PRIOR TO ANY MANUFACTURE OR CONSTRUCTION WORK.

NOTES:

DESIGN INTENT DRAWING



AREA LEGEND

- BICYCLE STORAGE
- BIN STORE
- CAR PARK
- CIRCULATION
- COMMS ROOM
- DELIVERY DROPOFF
- CORE
- GENERATOR ROOM
- LANDLORD LV SWITCHROOM
- PLANT
- SPRINKLER TANK ROOM 5.15m (WIDTH) X 9.165m (MIN ROOM LENGTH) X 3
- WATER STORAGE TANK ROOM 7.60m (WIDTH) X 11.1m (AS SHOWN) X 3.4m
- EV PARKING - as per DCC Development Plan
- BUILDING FOOTPRINT AT GROUND LEVEL
- EXTENT OF BASEMENT PILING

Rev	Date	Description	Issued By
013	23/09/2023	Amendments to DCC comments	JC
012	09/10/2023	Draft LRD Submission (113 UNITS)	MB
011	09/10/2023	Draft LRD Submission (113 UNITS)	MB
010	29/09/2023	Draft LRD Submission (113 UNITS)	AB
009	07/07/2023	LRD Submission	GK
008	10/03/2023	Planning S.32B Issue	AM
007	03/03/2023	Draft Planning Issue 2	AM
006	17/02/2023	Draft Planning Issue	BN
005	23/01/2023	Issued for Review	BN
004	20/01/2023	Issued for Review	BN
003	12/01/2023	Issued for Review	BN
002	05/12/2022	For Information	BN
001	08/11/22	For Information	BN
00	07/09/22	Section 247 Application	BN

PLANNING LRD

Client: Emrajare ltd

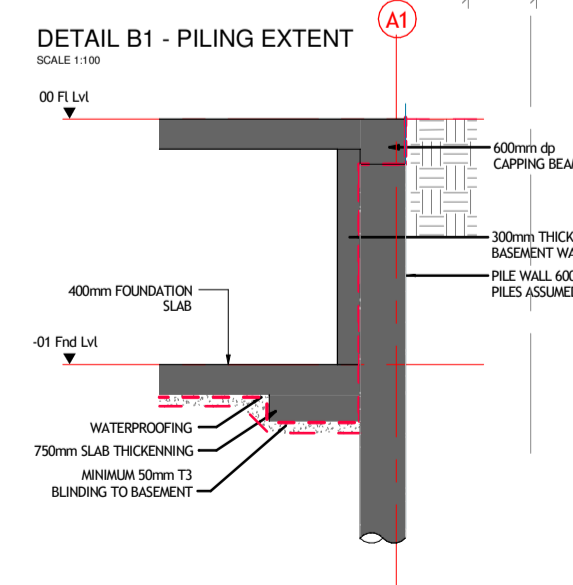
Project: Proposed LRD
Marble Arch, Davitt RD & Benbulbin RD, Dublin 12

Drawing Title: Proposed Basement Floor Plan

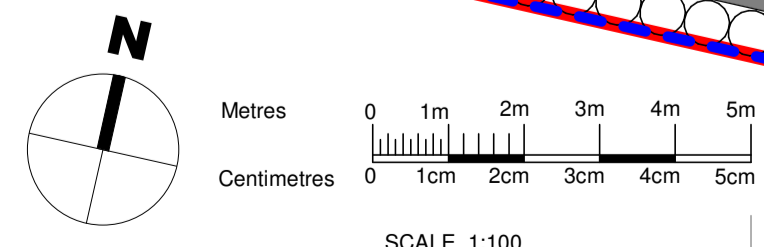
Drawn	Checked	Paper Size	Scale	Date
BN	JOC	A1	As indicated	OCT 2023

File Name: 20164-CWO-A-2000

Status: 013



B1 - Basement Floor LVL
1 : 100



All levels relative to OS Datum at Malin Head
Drawing based on Ordnance Survey Ireland (OSi)
Map sheet 3263-16 (1:1,000 Map Series)



No.1 Sarsfield Quay, Dublin 7, D07 R9FH
t: 01 518 0170 e: admin@cwoarchitects.ie
Dublin | Cork | Galway | London | UK & Europe +
www.cwoarchitects.ie

Please consider the environment before printing this sheet

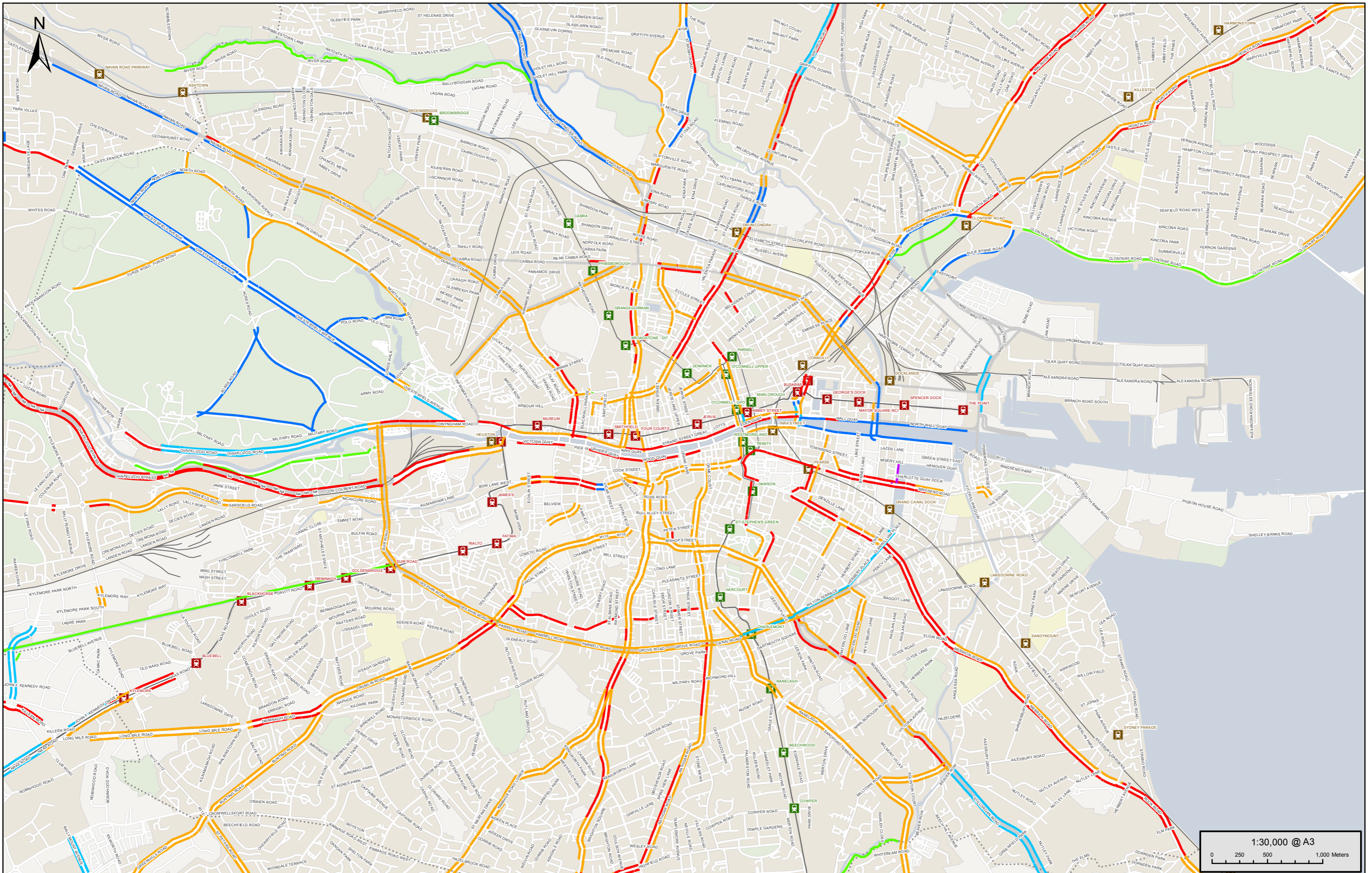
Appendix B Site Audit Questionnaire

SITE AUDIT	
Site and Building Access	
Number and location of site entrances?	
Who uses entrances and what are the opening hours?	
Car Parking	
How many formal car parking spaces are there?	
Is there evidence of informal car parking?	
Is there designated parking for pool vehicles/ expectant mothers/ mobility impaired/ 'other' car drivers?	
Is there a company car policy?	
Are the car parks managed, e.g. permit system, barriers, Pay and Display, short term spaces in areas of high demand?	
On-Site Facilities	
Are there set-down parking areas on site? Are they located at a footpath?	
Are showers and changing rooms provided for employees walking or cycling to work? How many and where? What standard are they? How often are they cleaned?	
Are storage areas such as lockers provided? How many and where? e.g. close to cycle parking	
Is travel information (public transport timetables, information on cycle parking locations, etc.) provided to employees? What and where? e.g. notice board, at reception, canteen, intranet	
Walking	
Are signposts provided where necessary?	
Are walking routes on-site well lit?	
Are walking routes on-site overlooked (natural surveillance) or covered by CCTV?	
Do walking routes on-site feature paths, pedestrian crossings, street lighting, dropped kerbs and tactile paving?	
Are pedestrians separated from vehicular traffic on-site?	

Is 'street clutter' kept to a minimum on paths?	
Are walking routes through the site pleasant to use?	
Are footpaths free of flooding?	
Are footpaths away from noise and exhaust fumes where possible?	
Cycling	
How many cycle parking spaces are available?	
Where is the cycle parking located?	
Are the spaces covered by CCTV or natural surveillance?	
What type of cycle parking is provided? e.g. covered, secure.	
Is cycle parking well lit?	
Is cycle parking signposted?	
Is cycle parking visible from the main entrances?	
Is visitor cycle parking available?	
Are there areas where people informally park/store their bikes (railings/offices)?	
Are fleet bikes provided? If so, how many?	
Are cyclists separated from vehicular traffic on the site?	
Do employees receive cycle business mileage? If so, at what rate?	
Is the cycle to work scheme offered? Are there any restrictions on participation?	
Are cycle routes through the site pleasant to use?	
Are there any issues with potholes, 'ponding' of water at the side of the road, etc.?	
Public Transport	
What scheduled bus services are available?	
When do they operate (frequency/ start & finish times)?	
Is an inter-site shuttle bus provided?	
Where are bus stops situated in relation to your site? Are bus shelters provided?	
Is there a train station nearby? What is the service provision?	
Where a bus enters the site, can it enter/exit the site swiftly at peak times?	

Is up-to-date public transport information (timetables, directions to stops) available on-site? Where?	
Are walking times and distances to local public transport nodes and amenities indicated?	
Are 'Tax Saver' tickets available to staff?	
Are they monthly or annual? Are there restrictions on purchase windows or availability of tickets?	
Is access to public transport stops from your site direct?	
Could you open access/ gates to allow more direct access?	
Car Sharing	
Does your company promote car sharing through a formal scheme?	
Are spaces marked out for car sharers? How many and where?	
Has your organisation availed of a free, private car-sharing group on www.carsharing.ie?	
HR Policies	
Does your organisation promote flexible working policies such as flexi-time, compressed working week, job sharing, home working? (office staff only)	
Local Area	
What facilities are available on-site or close by (e.g. shop, bank, dry cleaners, post office)? How accessible are they?	
Are there any proposed infrastructure changes on-site or locally that will affect how employees travel?	
Motorcyclists	
Are motorcycle spaces provided? If so, how many?	
Where are the spaces located? Are they well-lit and sheltered, with CCTV?	
Taxi Services	
Are there clear information points for local taxi services?	
Is there a waiting area for taxis?	
Does the site justify a dedicated taxi-rank?	
Goods/Service Vehicles	
Are there regular courier/haulage deliveries?	
Have suppliers reported any problems finding the site or making deliveries on-site?	
Other Comments/ Additional Information	

Appendix C Cycle Network Map



Project:
**CYCLE NETWORK PLAN FOR
 THE GREATER DUBLIN AREA**

Title:
**EXISTING CYCLE FACILITY TYPE
 DUBLIN CITY CENTRE
 SHEET E1**

- Legend:
- B1 - Bus Lane (no cycle lane)
 - C1 - Cycle Track - separated from road
 - C2 - Cycle Track - immediately adjacent
 - C3 - Cycle Lane (even within Bus Lane)
 - G1 - Cycle Trail or Greenway
 - S2 - Shared Walking & Cycling
 - Study Area
 - County Council Boundaries
 - Greenline Tram Stops
 - Redline Tram Stops
 - Stations

Udarás
Náisiúnta Iompair
 National Transport Authority

AECOM

**Roughan &
 O'Donovan**

Grand Canal House,
 Upper Grand Canal Street,
 Dublin 4
 Tel: +353 (0)1 238 3100
 Fax: +353 (0)1 238 3199
 www.aecom.com

Appendix D Luas Information

Frequency information taken from www.luas.ie.

Frequency

Eastbound ▾

Monday - Friday			
	Min	Avg	Max
05:53-07:00	4	7	20
07:00-10:00	3	4	6
10:00-16:00	4	4	6
16:00-19:00	4	4	6
19:00-00:23	4	11	15

Saturday			
	Min	Avg	Max
06:52-10:00	3	9	20
10:00-16:00	6	6	7
16:00-19:00	5	6	10
19:00-00:22	10	11	15

Sunday & Bank Holidays			
	Min	Avg	Max
07:22-12:00	6	12	20
12:00-19:00	5	9	11
19:00-23:22	10	11	12

Westbound ▾

Monday - Friday			
	Min	Avg	Max
05:55-07:00	20	20	20
07:00-10:00	3	4	15
10:00-16:00	4	4	7
16:00-19:00	3	4	6
19:00-00:55	5	9	15

Saturday			
	Min	Avg	Max
06:56-10:00	6	11	20
10:00-16:00	6	6	7
16:00-19:00	6	6	7
19:00-00:56	4	10	15

Sunday & Bank Holidays			
	Min	Avg	Max
07:26-12:00	10	14	20
12:00-19:00	4	8	11
19:00-23:56	5	10	12

Appendix E Bus Timetables

123

Buses from/to
From Walkinstown (Kilmanagh Rd.) To Marino
 Operative Date: 14/05/2018
 Version: TT 8.2

From Walkinstown (Kilmanagh Rd.) Towards Marino



Baile Bhailecín (Bóthar Chill na Manach) , Ospidéal San Séamus , Sráid Uí Chonaill , Baile Bhocht (Bóthar Chluain Life) , Marino (Ascaill Uí Ghriofa)

Buses leave terminus at:

Route Variations
 c To City Centre

Monday-Friday	Saturday	Sunday
06:10 06:30 06:50 07:02	07:00 07:15 07:30 07:45	09:10 09:40 10:10 10:40
07:14 07:24 07:34 07:44	then every 15 minutes until 1900	11:00 11:20 11:40 12:00
07:54 08:04 08:16 08:28	19:20 19:40 20:00 20:20	12:20 12:40 13:00 13:20
then every 12 minutes until 1604	20:40 21:00 21:20 21:40	13:40 14:00 14:20 14:40
16:14 16:24 16:34 16:44	22:00 22:20 22:40 23:00	15:00 15:20 15:40 16:00
16:54 17:04 17:14 17:24	23:30c	16:20 16:40 17:00 17:20
17:36 17:48 18:00 18:12		17:40 18:00 18:20 18:40
18:24 18:36 18:48 19:00		19:00 19:20 19:40 20:00
19:15 19:30 19:45 20:00		20:30 21:00 21:30 22:00
20:20 20:40 21:00 21:20		22:30 23:00 23:30c
21:40 22:00 22:20 22:40		
23:00 23:30c		

Walkinstown (Kilmanagh Rd.) » 20mins » St. James's Hospital » 20mins » O'Connell St. » 15mins » Ballybough Rd. (Clonliffe Rd.) » 7mins » Marino (Griffith Ave.)

All times are off peak estimates

From Marino Towards Walkinstown (Kilmanagh Rd.)



Marino (Ascaill Uí Ghriofa) , Baile Bhocht (Bóthar Chluain Life) , Sráid Uí Chonaill , Ospidéal San Séamus , Baile Bhailecín (Bóthar Chill na Manach)

Buses leave terminus at:

Route Variations
 c To City Centre

Monday-Friday	Saturday	Sunday
06:10 06:30 06:44 06:56	07:00 07:15 07:30 07:45	08:20 08:50 09:20 09:50
07:08 07:20 07:30 07:40	08:00 08:15 08:30 08:45	10:20 10:40 11:00 11:20
07:50 08:00 08:10 08:20	09:00 09:15 09:30 09:45	11:40 12:00 12:20 12:40
08:30 08:40 08:52 09:04	09:55 10:05 10:20 10:35	13:00 13:20 13:40 14:00
then every 12 minutes until 1604	then every 15 minutes until 1850	14:20 14:40 15:00 15:20
16:14 16:24 16:36 16:48	19:10 19:30 19:50 20:10	15:40 16:00 16:20 16:40
17:00 17:12 17:24 17:36	20:30 20:50 21:10 21:30	17:00 17:20 17:40 18:00
17:48 18:00 18:12 18:24	21:50 22:10 22:30 22:50	18:20 18:40 19:00 19:20
18:36 18:48 19:00 19:15	23:10 23:30c	19:40 20:00 20:30 21:00
19:30 19:45 20:00 20:20		21:30 22:00 22:30 23:10
20:40 21:00 21:20 21:40		23:30c
22:00 22:20 22:45 23:10		
23:30c		

Marino (Griffith Ave.) » 7mins » Ballybough Rd. (Clonliffe Rd.) » 15mins » O'Connell St. » 20mins » St. James's Hospital » 20mins » Walkinstown (Kilmanagh Rd.)

All times are off peak estimates

Fare Stages

- | | |
|---|--|
| 36 64 Walkinstown (Kilmanagh Rd.) | 27 73 Thomas St. (Watling St.) |
| 35 65 Drimnagh Rd. (Halfway House) | 26 74 Lord Edward St. |
| 34 66 Drimnagh Rd. (Our Lady's Hospital) | 25 75 O'Connell St. |
| 33 67 Galtymore Rd. (Cooley Rd.) | 24 76 Parnell St. / Cumberland St. |
| 32 68 Galtymore Rd. (Sperrin Rd.) | 23 77 Summerhill Parade (Canal Bridge) |
| 31 69 Suir Rd. (South Circular Rd.) | 22 78 Ballybough Rd. (Clonliffe Rd.) |
| 30 70 South Circular Rd. (Brookfield Rd.) | 21 79 Philipsburgh Ave. (Junction Croydon Gardens) |
| 29 71 St. James's Hospital | 20 80 Marino (Griffith Ave.) |
| 28 72 Thomas St. (Francis St.) | |

Appendix F Commuter Train Timetables

Baile Átha Cliath - Corcaigh - Seirbhísí Díreacha - Luan go Satham (gan saoire phoiblí san áireamh) - Bailí ó 21.03.2021 go bhfógrfar a mhalairet
Dublin - Cork - Direct Services - Monday to Saturday (excluding public holidays) - Valid from 21.03.2021 until further notice

		Mon to Sat	Mon to Sat	Mon to Sat	Mon to Sat	Mon to Sat	Mon to Sat	Mon to Sat	Mon to Sat	Mon to Sat	Mon to Sat	Mon to Sat	Mon to Sat	Mon to Sat	Mon to Sat
DUBLIN Heuston B L A	Dep	07:00	08:00	09:00	10:00	11:00	12:00	13:00	14:00	15:00	16:00	17:00	18:00	19:00	21:00
Park West & Cherry Orchard	Dep
Clondalkin Fonthill	Dep
Adamstown	Dep
Hazelhatch & Celbridge	Arr
Sallins & Naas	Dep
Newbridge	Arr
Kildare	Arr
Monasterevin	Dep
Portarlinton	Arr
Portlaoise	Arr	07:46	..	09:44	10:44	11:44	12:44	13:44	14:44	19:46	21:44
Ballybrophy	Dep	10:00	15:00	18:57	20:01	..
Templemore	Dep	..	09:04	12:08	20:14	..
Thurles	Dep	08:15	09:14	10:17	11:13	12:17	13:14	14:14	15:18	16:10	17:11	..	19:15	20:22	22:14
Limerick Junction	Dep	08:35	09:32	10:35	11:31	12:35	13:32	14:32	15:36	16:29	17:30	18:27	19:33	20:40	22:35
Charleville	Dep	10:59	..	12:58	16:51	21:04	..
Mallow	Arr	09:09	10:07	11:14	12:05	13:14	14:07	15:06	16:10	17:07	18:04	18:59	20:08	21:19	23:07
Mallow	Dep	09:09	10:07	11:14	12:05	13:14	14:07	15:06	16:10	17:07	18:04	18:59	20:08	21:19	23:07
CORK (Kent) P T	Arr	09:37	10:37	11:45	12:37	13:44	14:37	15:37	16:42	17:37	18:37	19:32	20:37	21:48	23:37

A Bus connection to/from Dublin Airport available nearby. **B** Bus Link (Route 145) to/from Dublin City Centre.

L LUAS Tram Link to/from Dublin City Centre and Connolly Station. **P** Bus Link (Routes 225/226) to Cork Airport.

T Bus Link (Route 205) to U.C.C. and M.T.U. **♿** Limited Bicycle accommodation, check www.irishrail.ie.

Passengers should allow 1 hour transfer time between Heuston and Connolly Stations, when using LUAS or bus services.


Station platform gates will close 2 minutes prior to departure.

follow us on



Baile Átha Cliath - Corcaigh - Seirbhísí Díreacha - Dé Domhnaigh (gan saoire phoiblí san áireamh) - Bailí ó 21.03.2021 go bhfógrófar a mhalairt
Dublin - Cork - Direct Services - Sunday (excluding public holidays) - Valid from 21.03.2021 until further notice

		Sun Only	Sun Only	Sun Only	Sun Only	Sun Only	Sun Only	Sun Only	Sun Only	Sun Only	Sun Only
DUBLIN Heuston B L A	Dep	10:00	12:00	13:00	14:00	15:00	16:00	17:00	18:00	19:00	21:00
Park West & Cherry Orchard	Dep
Clondalkin Fonthill	Dep
Adamstown	Dep
Hazelhatch & Celbridge	Arr
Sallins & Naas	Dep
Newbridge	Arr
Kildare	Arr
Monasterevin	Dep
Portarlinton	Arr	21:36
Portlaoise	Arr	10:44
Ballybrophy	Dep
Templemore	Dep
Thurles	Dep	11:14	13:09	14:09	15:09	16:09	17:09	18:09	19:08	20:09	22:13
Limerick Junction	Dep	11:32	13:29	..	15:29	..	17:29	..	19:29	..	22:35
Charleville	Dep	14:50	17:51
Mallow	Arr	12:06	14:02	15:05	16:02	17:02	18:06	19:00	20:00	21:01	23:07
Mallow	Dep	12:06	14:02	15:05	16:02	17:02	18:06	19:00	20:00	21:01	23:07
CORK (Kent) P T	Arr	12:37	14:34	15:32	16:32	17:28	18:37	19:27	20:34	21:27	23:37

A Bus connection to/from Dublin Airport available nearby. **B** Bus Link (Route 145) to/from Dublin City Centre.
L LUAS Tram Link to/from Dublin City Centre and Connolly Station. **P** Bus Link (Routes 225/226) to Cork Airport.
T Bus Link (Route 205) to U.C.C. and M.T.U.  Limited Bicycle accommodation, check www.irishrail.ie.
 Passengers should allow 1 hour transfer time between Heuston and Connolly Stations, when using LUAS or bus services.
 Station platform gates will close 2 minutes prior to departure.

follow us on



Corcaigh - Baile Átha Cliath - Seirbhísí Díreacha - Luan go Satham (gan saoire phoiblí san áireamh) - Bailí ó 21.03.2021 go bhfógrfar a mhalaírt
Cork - Dublin - Direct Services - Monday to Saturday (excluding public holidays) - Valid from 21.03.2021 until further notice

		Mon to Sat	Mon to Fri	Mon to Sat	Mon to Sat	Mon to Sat	Mon to Sat	Mon to Sat	Mon to Sat	Mon to Sat	Mon to Sat	Mon to Sat	Mon to Sat	Mon to Sat	Mon to Sat	Mon to Sat	Mon to Sat
CORK (Kent) P T	Dep	05:45	06:15	07:00	09:25	10:25	11:25	12:25	13:25	14:25	15:25	16:25	17:25	18:25	19:25	20:25	
Mallow	Arr	06:05	..	07:22	09:46	10:46	11:46	12:46	13:45	14:46	15:46	16:46	17:46	18:46	19:47	20:47	
Mallow	Dep	06:09	..	07:22	09:46	10:46	11:46	12:46	13:45	14:46	15:46	16:46	17:46	18:46	19:47	20:47	
Charleville	Dep	06:23	11:02	15:02	..	17:02	..	19:02	
Limerick Junction	Dep	06:44	..	07:55	10:22	11:25	12:22	13:24	14:22	15:24	16:24	17:24	18:23	19:24	20:24	21:28	
Thurles	Dep	07:01	..	08:14	10:41	..	12:41	..	14:40	15:43	16:41	17:42	18:41	19:43	20:42	21:45	
Templemore	Dep	11:48	..	13:46	17:52	..	19:52	
Ballybrophy	Dep	12:59	18:59	
Portlaoise	Dep	11:13	..	13:17	14:13	15:13	..	17:13	18:18	19:17	20:19	21:14	22:17	
Portarlington	Dep	
Monasterevin	Dep	
Kildare	Dep	
Newbridge	Dep	
Sallins & Naas	Dep	
Hazelhatch & Celbridge	Dep	
Adamstown	Dep	
Clondalkin Fonthill	Dep	
Park West & Cherry Orchard	Dep	
DUBLIN Heuston B L A	Arr	08:20	08:30	09:31	12:00	12:58	14:06	15:00	15:59	16:59	18:01	19:06	20:04	21:06	22:00	23:03	

A Bus connection to/from Dublin Airport available nearby. **B** Bus Link (Route 145) to/from Dublin City Centre.

L LUAS Tram Link to/from Dublin City Centre and Connolly Station. **P** Bus Link (Routes 225/226) to Cork Airport.

T Bus Link (Route 205) to U.C.C. and M.T.U. **🚲** Limited Bicycle accommodation, check www.irishrail.ie.

Passengers should allow 1 hour transfer time between Heuston and Connolly Stations, when using LUAS or bus services.


Station platform gates will close 2 minutes prior to departure.

follow us on



Corcaigh - Baile Átha Cliath - Seirbhísí Díreacha - Dé Domhnaigh (gan saoire phoiblí san áireamh) - Bailí ó 21.03.2021 go bhfógrófar a mhalairt
Cork - Dublin - Direct Services - Sunday (excluding public holidays) - Valid from 21.03.2021 until further notice

		Sun Only	Sun Only	Sun Only	Sun Only	Sun Only	Sun Only	Sun Only	Sun Only	Sun Only	Sun Only
CORK (Kent) P T	Dep	08:25	10:25	12:25	13:25	14:25	15:25	16:25	17:25	18:25	19:25
Mallow	Arr	08:46	10:46	12:46	13:46	14:45	15:46	16:46	17:46	18:46	19:46
Mallow	Dep	08:46	10:46	12:46	13:46	14:45	15:46	16:46	17:46	18:46	19:46
Charleville	Dep	09:02	11:02	13:02	..	15:01	..	17:02	..	19:02	..
Limerick Junction	Dep	09:24	11:24	13:23	14:23	..	16:20	..	18:20	19:23	20:20
Thurles	Dep	..	11:43	13:42	14:41	15:38	16:39	17:40	18:39	19:42	20:39
Templemore	Dep
Ballybrophy	Dep
Portlaoise	Dep	20:14	21:11
Portarlington	Dep
Monasterevin	Dep
Kildare	Dep
Newbridge	Dep
Sallins & Naas	Dep
Hazelhatch & Celbridge	Dep
Adamstown	Dep
Clondalkin Fonthill	Dep
Park West & Cherry Orchard	Dep
DUBLIN Heuston B L A	Arr	10:53	12:57	14:58	15:58	16:55	17:56	18:54	19:55	20:59	21:58

A Bus connection to/from Dublin Airport available nearby. **B** Bus Link (Route 145) to/from Dublin City Centre.
L LUAS Tram Link to/from Dublin City Centre and Connolly Station. **P** Bus Link (Routes 225/226) to Cork Airport.
T Bus Link (Route 205) to U.C.C. and M.T.U.  Limited Bicycle accommodation, check www.irishrail.ie.
 Passengers should allow 1 hour transfer time between Heuston and Connolly Stations, when using LUAS or bus services.
 Station platform gates will close 2 minutes prior to departure.

follow us on




		Mon to Sat	Mon to Fri	Sat Only	Mon to Sat	Mon to Sat	Mon to Sat	Mon to Sat	Mon to Sat	Mon to Sat	Mon to Sat	Mon to Sat	Mon to Sat	Mon to Sat	Mon to Sat	Mon to Sat	Mon to Sat	Mon to Sat	Mon to Sat	Mon to Sat	Mon to Sat	
DUBLIN Heuston ^B ^L ^A	Dep	07:00	08:00	..	09:00	..	10:00	..	11:00	..	12:00	..	13:00	..	14:00	..
Hazelhatch & Celbridge	Dep
Sallins & Naas	Dep
Newbridge	Dep
Kildare	Dep
Monasterevin	Dep
Portarlinton	Dep
Portlaoise	Dep	07:46	09:44	..	10:44	..	11:44	..	12:44	..	13:44	..	14:44	..
Ballybrophy	Dep	10:00	15:00	..
Templemore	Dep	09:04	12:08
Thurles	Dep	..	07:45	08:15	09:14	..	10:17	..	11:13	..	12:17	..	13:14	..	14:14	..	15:18	..
Limerick Junction	Arr	..	08:03	08:35	09:32	..	10:35	..	11:31	..	12:35	..	13:32	..	14:32	..	15:36	..
Limerick Junction	Dep	..	08:07	08:07	08:38	09:37	..	10:40	..	11:36	..	12:40	..	13:37	..	14:37	..	15:40
LIMERICK (Colbert)	Arr	..	08:34	08:34	09:04	10:03	..	11:06	..	12:02	..	13:06	..	14:03	..	15:03	..	16:06
LIMERICK (Colbert)	Dep	05:55	08:40	09:20	12:30	14:20	16:30
Sixmilebridge	Dep	06:17	09:02	09:42	12:52	14:42	16:52
ENNIS	Arr	06:34	09:19	09:59	13:09	14:59	17:09
	To	To	To
	Galway	Galway	Galway

A Bus connection to/from Dublin Airport available nearby. **B** Bus Link (Route 145) to/from Dublin City Centre.
L LUAS Tram Link to/from Dublin City Centre and Connolly Station. **P** Bus Link (Routes 225/226) to Cork Airport.
T Bus Link (Route 205) to U.C.C. and M.T.U. ^{fb} Limited Bicycle accommodation, check www.irishrail.ie.
 Passengers should allow 1 hour transfer time between Heuston and Connolly Stations, when using LUAS or bus services.
 Station platform gates will close 2 minutes prior to departure.

Baile Átha Cliath - Luimneach - Inis - Luan go Satharn (gan saoire phoiblí san áireamh) - Bailí ó 21.03.2021 go bhfógrófar a mhalairt
Dublin – Limerick - Ennis - Monday to Saturday (excluding public holidays) - Valid from 21.03.2021 until further notice

BÁC - Luimneach - Inis - Luan go Satharn (gan saoire phoiblí san áireamh)
Dublin – Limerick - Ennis - Monday to Saturday (excluding public holidays)


		Mon to Sat	Mon to Sat	Mon to Sat	Mon to Sat	Mon to Sat	Mon to Sat	Mon to Sat	Mon to Sat	Mon to Sat	Mon to Sat	Mon to Sat	Mon to Sat	Mon to Sat	Mon to Sat	Mon to Sat	Mon to Sat	Mon to Sat
DUBLIN Heuston B 1 A	Dep	15:00	..	15:30	16:00	16:25	17:00	..	17:25	..	18:00	..	19:00	..	21:00	..
Hazelhatch & Celbridge	Dep
Sallins & Naas	Dep
Newbridge	Dep
Kildare	Dep	15:59	17:54
Monasterevin	Dep	16:59
Portarlinton	Dep	16:10	17:05	18:05
Portlaoise	Dep	16:20	17:15	18:15	19:46	..	21:44	..
Ballybrophy	Dep	16:35	17:29	18:29	..	18:57	..	20:01
Templemore	Dep	16:48	17:41	18:42	20:14
Thurles	Dep	16:10	..	16:56	17:11	17:49	18:51	..	19:15	..	20:22	..	22:14	..
Limerick Junction	Arr	16:29	17:30	18:11	18:27	19:33	..	20:40	..	22:35	..
Limerick Junction	Dep	..	16:33	17:34	..	18:15	..	18:31	19:38	..	20:45	..	22:38
LIMERICK (Colbert)	Arr	..	16:59	17:43	..	18:00	..	18:43	..	18:57	19:42	20:04	..	21:11	..	23:04
LIMERICK (Colbert)	Dep	18:05	19:50	..	20:30
Sixmilebridge	Dep	18:27	20:12	..	20:52
ENNIS	Arr	18:44	20:29	..	21:09
		To	To
		Galway	Galway

A Bus connection to/from Dublin Airport available nearby. **B** Bus Link (Route 145) to/from Dublin City Centre.
1 LUAS Tram Link to/from Dublin City Centre and Connolly Station. **P** Bus Link (Routes 225/226) to Cork Airport.
1 Bus Link (Route 205) to U.C.C. and M.T.U.  Limited Bicycle accommodation, check www.irishrail.ie.
 Passengers should allow 1 hour transfer time between Heuston and Connolly Stations, when using LUAS or bus services.
 Station platform gates will close 2 minutes prior to departure.

follow us on




		Sun Only	Sun Only	Sun Only	Sun Only	Sun Only	Sun Only	Sun Only	Sun Only	Sun Only	Sun Only	Sun Only	Sun Only	Sun Only	Sun Only	Sun Only	Sun Only	Sun Only	Sun Only	Sun Only	Sun Only	Sun Only
DUBLIN Heuston B L A	Dep	08:30	..	10:00	..	11:25	12:00	13:25	..	14:00	15:25	16:00
Hazelhatch & Celbridge	Dep
Sallins & Naas	Dep
Newbridge	Dep
Kildare	Dep	11:53	13:53	15:53
Monasterevin	Dep
Portarlinton	Dep	12:05	14:05	16:05
Portlaoise	Dep	09:13	..	10:44	..	12:15	14:15	16:15
Ballybrophy	Dep	12:30	14:30	16:30
Templemore	Dep	12:44	14:43	16:43
Thurles	Dep	09:41	..	11:14	..	12:53	13:09	14:52	..	15:09	16:52	17:09
Limerick Junction	Arr	10:03	..	11:32	13:29	15:29	17:29
Limerick Junction	Dep	10:08	..	11:37	13:33	..	14:47	15:33	16:47	17:33	..	18:47
LIMERICK (Colbert)	Arr	10:34	..	12:03	13:41	..	13:59	..	15:20	15:40	15:59	17:20	17:40	..	17:59	..	19:20
LIMERICK (Colbert)	Dep	06:50	09:00	..	10:45	..	12:28	14:10	15:55	18:15	..
Sixmilebridge	Dep	07:12	09:22	..	11:06	..	12:50	14:32	16:17	18:37	..
ENNIS	Arr	07:29	09:39	..	11:24	..	13:07	14:49	16:34	18:54	..
		..	To	To	To	To	..
		..	Galway	Galway	Galway	Galway	..

A Bus connection to/from Dublin Airport available nearby. **B** Bus Link (Route 145) to/from Dublin City Centre.
L LUAS Tram Link to/from Dublin City Centre and Connolly Station. **P** Bus Link (Routes 225/226) to Cork Airport.
T Bus Link (Route 205) to U.C.C. and M.T.U.  Limited Bicycle accommodation, check www.irishrail.ie.
 Passengers should allow 1 hour transfer time between Heuston and Connolly Stations, when using LUAS or bus services.
 Station platform gates will close 2 minutes prior to departure.

follow us on










		Sun Only	Sun Only	Sun Only	Sun Only	Sun Only	Sun Only	Sun Only	Sun Only
DUBLIN Heuston B L A	Dep	18:00	..	18:25	..	19:05	..	19:25	21:10
Hazelhatch & Celbridge	Dep
Sallins & Naas	Dep	19:41	..
Newbridge	Dep	18:46	19:50	21:31
Kildare	Dep	18:57	20:01	21:42
Monasterevin	Dep	19:05	20:09	..
Portarlinton	Dep	19:11	..	19:42	..	20:15	21:53
Portlaoise	Dep	19:21	20:26	22:04
Ballybrophy	Dep	19:36	20:40	..
Templemore	Dep	19:47	20:52	..
Thurles	Dep	19:08	..	19:55	..	20:18	..	21:01	22:33
Limerick Junction	Arr	19:29	20:40
Limerick Junction	Dep	..	19:33	20:45
LIMERICK (Colbert)	Arr	..	19:59	20:43	21:11	21:49	23:20
LIMERICK (Colbert)	Dep	20:50
Sixmilebridge	Dep	21:12
ENNIS	Arr	21:29
	
	

A Bus connection to/from Dublin Airport available nearby. **B** Bus Link (Route 145) to/from Dublin City Centre.
L LUAS Tram Link to/from Dublin City Centre and Connolly Station. **P** Bus Link (Routes 225/226) to Cork Airport.
T Bus Link (Route 205) to U.C.C. and M.T.U.  Limited Bicycle accommodation, check www.irishrail.ie.
 Passengers should allow 1 hour transfer time between Heuston and Connolly Stations, when using LUAS or bus services.
 Station platform gates will close 2 minutes prior to departure.

follow us on



		Mon to Sat	Mon to Sat	Mon to Sat	Mon to Sat	Mon to Sat	Mon to Sat	Mon to Sat	Mon to Sat	Mon to Sat	Mon to Sat	Mon to Sat	Mon to Sat	Mon to Sat	Mon to Sat	Mon to Sat	Mon to Sat	Mon to Sat	Mon to Sat	Mon to Sat	Mon to Sat	Mon to Sat
		From Galway	From Galway
ENNIS	Dep	06:50	..	07:40	10:00	11:42
Sixmilebridge	Dep	07:06	..	07:57	10:17	11:58
LIMERICK (Colbert)	Arr	07:30	..	08:20	10:40	12:22
LIMERICK (Colbert)	Dep	05:25	06:15	..	06:40	07:25	07:40	..	08:55	09:50	..	10:56	..	11:50	12:55	..	13:50	..
Limerick Junction	Arr	05:53	06:43	07:53	09:23	10:20	..	11:24	..	12:19	13:23	..	14:20	..
Limerick Junction	Dep	05:58	..	06:44	07:55	09:26	..	10:22	..	11:25	..	12:22	13:24	..	14:22
Thurles	Dep	06:15	..	07:01	07:22	..	08:14	..	08:23	..	09:45	..	10:41	12:41	14:40
Templemore	Dep	06:24	07:31	08:32	11:48	13:46
Ballybrophy	Dep	06:36	07:42	08:44	12:59
Portlaoise	Dep	06:54	08:00	09:02	11:13	13:17	14:13	..	15:13
Portarlinton	Dep	08:10
Monasterevin	Dep	07:07
Kildare	Dep	07:18	08:24
Newbridge	Dep	09:28
Sallins & Naas	Dep	08:35
Hazelhatch & Celbridge	Dep
DUBLIN Heuston 	Arr	07:50	..	08:20	08:57	..	09:31	..	09:57	..	10:59	..	12:00	..	12:58	..	14:06	15:00	..	15:59

 Bus connection to/from Dublin Airport available nearby.  Bus Link (Route 145) to/from Dublin City Centre.
 LUAS Tram Link to/from Dublin City Centre and Connolly Station.  Bus Link (Routes 225/226) to Cork Airport.
 Bus Link (Route 205) to U.C.C. and M.T.U.  Limited Bicycle accommodation, check www.irishrail.ie.
 Passengers should allow 1 hour transfer time between Heuston and Connolly Stations, when using LUAS or bus services.
 Station platform gates will close 2 minutes prior to departure.

follow us on




		Mon to Sat	Mon to Sat	Mon to Sat	Mon to Sat	Mon to Sat	Mon to Sat	Mon to Sat	Mon to Sat	Mon to Sat	Mon to Sat	Mon to Sat	Mon to Sat	Mon to Sat	Mon to Sat	Mon to Fri	Mon to Sat	Mon to Sat	Mon to Sat
		From Galway	From Galway
ENNIS	Dep	13:25	15:01	17:25	19:09	21:10	
Sixmilebridge	Dep	13:41	15:19	17:41	19:26	21:26	
LIMERICK (Colbert)	Arr	14:05	15:42	18:05	19:49	21:50	
LIMERICK (Colbert)	Dep	..	14:55	..	15:55	..	16:50	..	17:50	18:50	..	19:55	..	20:55	
Limerick Junction	Arr	..	15:23	..	16:23	..	17:18	..	18:22	19:18	..	20:23	..	21:27	
Limerick Junction	Dep	15:24	..	16:24	..	17:24	..	18:23	19:24	..	20:24	..	21:28	..	
Thurles	Dep	15:43	..	16:41	..	17:42	..	18:41	19:43	..	20:42	..	21:45	..	
Templemore	Dep	17:52	19:52	
Ballybrophy	Dep	18:59	
Portlaoise	Dep	17:13	..	18:18	..	19:17	20:19	..	21:14	..	22:17	..	
Portarlinton	Dep	
Monasterevin	Dep	
Kildare	Dep	
Newbridge	Dep	
Sallins & Naas	Dep	
Hazelhatch & Celbridge	Dep	
DUBLIN Heuston B L A	Arr	16:59	..	18:01	..	19:06	..	20:04	21:06	..	22:00	..	23:03	..	

A Bus connection to/from Dublin Airport available nearby. **B** Bus Link (Route 145) to/from Dublin City Centre.
L LUAS Tram Link to/from Dublin City Centre and Connolly Station. **P** Bus Link (Routes 225/226) to Cork Airport.
T Bus Link (Route 205) to U.C.C. and M.T.U. **♿** Limited Bicycle accommodation, check www.irishrail.ie.
 Passengers should allow 1 hour transfer time between Heuston and Connolly Stations, when using LUAS or bus services.
 Station platform gates will close 2 minutes prior to departure.

follow us




		Sun Only	Sun Only	Sun Only	Sun Only	Sun Only	Sun Only	Sun Only	Sun Only	Sun Only	Sun Only	Sun Only	Sun Only	Sun Only	Sun Only	Sun Only	Sun Only	Sun Only	Sun Only	Sun Only
		From Galway	From Galway
ENNIS	Dep	07:40	09:41	11:35	13:08	15:15	..
Sixmilebridge	Dep	07:56	09:57	11:51	13:25	15:31	..
LIMERICK (Colbert)	Arr	08:20	10:20	12:15	13:48	15:55	..
LIMERICK (Colbert)	Dep	..	08:25	09:30	..	10:25	10:50	12:25	12:50	..	13:54	..	14:20	14:45	15:50	16:20
Limerick Junction	Arr	09:58	11:18	13:18	..	14:22	15:16	16:18
Limerick Junction	Dep	11:24	13:23	..	14:23	16:20
Thurles	Dep	..	09:08	11:08	..	11:43	..	13:08	..	13:42	..	14:41	15:05	16:39	..	17:03
Templemore	Dep	..	09:17	11:17	13:17	15:13	17:12
Ballybrophy	Dep	..	09:29	11:29	13:29	15:25	17:25
Portlaoise	Dep	..	09:46	11:46	13:46	15:44	17:43
Portarlington	Dep	..	09:56	11:55	13:55	15:53	17:52
Monasterevin	Dep	..	10:04
Kildare	Dep	..	10:14	12:11	14:11	16:08	18:07
Newbridge	Dep
Sallins & Naas	Dep
Hazelhatch & Celbridge	Dep
DUBLIN Heuston B L A	Arr	..	10:43	12:40	..	12:57	..	14:40	..	14:58	..	15:58	16:38	17:56	..	18:37

A Bus connection to/from Dublin Airport available nearby. **B** Bus Link (Route 145) to/from Dublin City Centre.
L LUAS Tram Link to/from Dublin City Centre and Connolly Station. **P** Bus Link (Routes 225/226) to Cork Airport.
T Bus Link (Route 205) to U.C.C. and M.T.U.  Limited Bicycle accommodation, check www.irishrail.ie.
 Passengers should allow 1 hour transfer time between Heuston and Connolly Stations, when using LUAS or bus services.
 Station platform gates will close 2 minutes prior to departure.

follow us on



		Sun Only	Sun Only	Sun Only	Sun Only	Sun Only	Sun Only	Sun Only	Sun Only	Sun Only	Sun Only	Sun Only
		From	From	..
		Galway	Galway	..
ENNIS	Dep	17:25	19:00	..	19:47	21:40
Sixmilebridge	Dep	17:42	19:16	..	20:04	21:56
LIMERICK (Colbert)	Arr	18:05	19:38	..	20:27	22:20
LIMERICK (Colbert)	Dep	16:45	17:50	18:20	18:45	..	19:50
Limerick Junction	Arr	17:16	18:18	19:16	..	20:19
Limerick Junction	Dep	18:20	19:23	..	20:20
Thurles	Dep	18:39	..	19:03	..	19:42	..	20:39
Templemore	Dep	19:12
Ballybrophy	Dep	19:25
Portlaoise	Dep	19:42	..	20:14	..	21:10
Portarlinton	Dep	19:52
Monasterevin	Dep
Kildare	Dep	20:07
Newbridge	Dep
Sallins & Naas	Dep
Hazelhatch & Celbridge	Dep
DUBLIN Heuston B L A	Arr	19:55	..	20:36	..	20:59	..	21:58

A Bus connection to/from Dublin Airport available nearby. **B** Bus Link (Route 145) to/from Dublin City Centre.
L LUAS Tram Link to/from Dublin City Centre and Connolly Station. **P** Bus Link (Routes 225/226) to Cork Airport.
T Bus Link (Route 205) to U.C.C. and M.T.U.  Limited Bicycle accommodation, check www.irishrail.ie.
 Passengers should allow 1 hour transfer time between Heuston and Connolly Stations, when using LUAS or bus services.
 Station platform gates will close 2 minutes prior to departure.

Baile Átha Cliath - Luimneach (bealach Aonach Urmhumhan) - Luan go Domhnach (gan saoire phoiblí san áireamh) - Bailí ó 21.03.2021 go bhfógrófar a mhalairt
Dublin – Limerick (Via Nenagh) - Monday to Sunday (excluding public holidays) - Valid from 21.03.2021 until further notice

		Mon to Fri	Mon to Sat	Mon to Sat	Mon to Sat	Mon to Sat
DUBLIN Heuston B L A	Dep	..	09:00	..	18:00	..
Newbridge	Dep
Kildare	Dep
Monasterevin	Dep
Portarlinton	Dep
Portlaoise	Dep	..	09:44
BALLYBROPHY	Arr	..	09:59	..	18:57	..
BALLYBROPHY	Dep	10:08	..	19:05
Roscrea	Dep	10:30	..	19:27
Cloughjordan	Dep	10:50	..	19:47
Nenagh	Dep	07:45	..	11:12	..	20:08
Birdhill	Dep	08:11	..	11:38	..	20:34
Castleconnell	Dep	08:20	..	11:46	..	20:42
LIMERICK (Colbert)	Arr	08:41	..	12:07	..	21:03

		Sun Only	Sun Only
DUBLIN Heuston B L A	Dep	18:25	..
Newbridge	Dep	18:46	..
Kildare	Dep	18:57	..
Monasterevin	Dep	19:05	..
Portarlinton	Dep	19:11	..
Portlaoise	Dep	19:21	..
BALLYBROPHY	Arr	19:36	..
BALLYBROPHY	Dep	..	19:42
Roscrea	Dep	Via Thurles	20:04
Cloughjordan	Dep		20:24
Nenagh	Dep		20:45
Birdhill	Dep		21:11
Castleconnell	Dep		21:19
LIMERICK (Colbert)	Arr	20:43	21:40

A Bus connection to/from Dublin Airport available nearby. **B** Bus Link (Route 145) to/from Dublin City Centre.

L LUAS Tram Link to/from Dublin City Centre and Connolly Station.

 Limited Bicycle accommodation, check www.irishrail.ie.

Station platform gates will close 2 minutes prior to departure. Passengers should allow 1 hour transfer time between Connolly and Heuston Stations, when using LUAS or bus services.

follow us on



Luimneach (bealach Aonach Urmhumhan) - Baile Átha Cliath - Luan go Domhnach (gan saoire phoiblí san áireamh) - Bailí ó 21.03.2021 go bhfógrófar a mhalairt
 Limerick (Via Nenagh) - Dublin - Monday to Sunday (excluding public holidays) - Valid from 21.03.2021 until further notice

		Mon to Sat	Mon to Sat	Mon to Sat	Mon to Sat
LIMERICK (Colbert)	Dep	06:30	07:40	16:55	..
Castleconnell	Dep	06:50	..	17:15	..
Birdhill	Dep	06:58	Via Thurles	17:24	..
Nenagh	Dep	07:35		17:51	..
CloughJordan	Dep	07:55		18:11	..
Roscrea	Dep	08:17		18:32	..
BALLYBROPHY	Arr	08:40	..	18:55	..
BALLYBROPHY	Dep	..	08:44	..	18:59
Portlaoise	Dep	..	09:02	..	19:17
Portarlington	Dep
Monasterevin	Dep
Kildare	Dep
Newbridge	Dep	..	09:28
DUBLIN Heuston B L A	Arr	..	09:57	..	20:04

		Sun Only	Sun Only
LIMERICK (Colbert)	Dep	17:20	18:20
Castleconnell	Dep	17:40	..
Birdhill	Dep	17:49	Via Thurles
Nenagh	Dep	18:16	
CloughJordan	Dep	18:36	
Roscrea	Dep	18:58	
BALLYBROPHY	Arr	19:21	..
BALLYBROPHY	Dep	..	19:25
Portlaoise	Dep	..	19:42
Portarlington	Dep	..	19:52
Monasterevin	Dep
Kildare	Dep	..	20:07
Newbridge	Dep
DUBLIN Heuston B L A	Arr	..	20:36

A Bus connection to/from Dublin Airport available nearby. **B** Bus Link (Route 145) to/from Dublin City Centre.

L LUAS Tram Link to/from Dublin City Centre and Connolly Station.

B Limited Bicycle accommodation, check www.irishrail.ie.

Station platform gates will close 2 minutes prior to departure. Passengers should allow 1 hour transfer time between Connolly and Heuston Stations, when using LUAS or bus services.

follow us on



		Mon to Sat	Mon to Sat	Mon to Sat	Mon to Sat	Fri Only	Mon to Sat	Mon to Sat	Mon to Sat	Mon to Sat
DUBLIN Heuston B L A	Dep	07:20	10:15	13:15	15:10	16:15	16:40	17:35	18:35	20:15
Park West & Cherry Orchard	Dep	20:22
Clondalkin Fonthill	Dep	20:26
Adamstown	Dep	20:31
Hazelhatch & Celbridge	Dep	16:53	20:36
Sallins & Naas	Dep	17:03	17:52	..	20:45
Newbridge	Dep	07:41	15:31	18:56	20:52
Kildare	Dep	07:51	10:43	..	15:42	..	17:20	18:09	19:07	21:02
Athy	Dep	08:09	10:59	13:56	15:58	17:13	17:40	18:25	19:23	21:17
CARLOW	Arr	08:22	11:11	14:09	16:10	17:25	17:53	18:38	19:36	21:31
Carlow	Dep	08:22	11:11	14:12	16:10	17:25	17:53	18:38	19:42	..
Muine Bheag	Dep	08:46	11:24	14:25	16:22	..	18:06	18:51	19:55	..
Kilkenny (MacDonagh)	Arr	09:03	11:42	14:43	16:40	..	18:24	19:08	20:13	..
Kilkenny (MacDonagh)	Dep	09:07	11:46	14:47	16:44	..	18:28	19:12	20:17	..
Thomastown	Dep	09:19	11:58	14:59	16:56	..	18:40	19:24	20:29	..
WATERFORD (Plunkett)	Arr	09:44	12:23	15:30	17:21	18:15	19:04	19:48	20:54	..

		Sun Only	Sun Only	Sun Only	Sun Only
DUBLIN Heuston B L A	Dep	09:10	14:10	17:45	18:40
Park West & Cherry Orchard	Dep
Clondalkin Fonthill	Dep
Adamstown	Dep
Hazelhatch & Celbridge	Dep
Sallins & Naas	Dep
Newbridge	Dep	09:31	14:31	18:06	..
Kildare	Dep	09:42	14:42	18:17	19:09
Athy	Dep	09:58	14:58	18:33	19:29
CARLOW	Arr	10:11	15:11	18:46	19:42
Carlow	Dep	10:14	15:11	18:46	19:42
Muine Bheag	Dep	10:27	15:24	19:01	19:55
Kilkenny (MacDonagh)	Arr	10:45	15:42	19:20	20:13
Kilkenny (MacDonagh)	Dep	10:49	15:47	19:24	20:17
Thomastown	Dep	11:01	15:59	19:36	20:29
WATERFORD (Plunkett)	Arr	11:26	16:24	20:01	20:54

A Bus connection to/from Dublin Airport available nearby. **B** Bus Link (Route 145) to/from Dublin City Centre.

L LUAS Tram Link to/from Dublin City Centre and Connolly Station. Limited Bicycle accommodation, check www.irishrail.ie.

Station platform gates will close 2 minutes prior to departure. Passengers should allow 1 hour transfer time between Connolly and Heuston Stations, when using LUAS or bus services.

follow us on



		Mon to Fri	Mon to Sat	Mon to Sat	Mon to Sat	Mon to Sat	Mon to Sat	Mon to Sat	Fri & Sat Only	Mon to Sat	Mon to Fri
WATERFORD (Plunkett)	Dep	..	05:55	07:00	07:50	11:00	13:05	14:50	16:05	18:25	..
Thomastown	Dep	..	06:16	..	08:11	11:21	13:25	15:12	..	18:55	..
Kilkenny (MacDonagh)	Arr	..	06:31	..	08:26	11:37	13:41	15:26	..	19:11	..
Kilkenny (MacDonagh)	Dep	..	06:35	..	08:30	11:43	13:45	15:30	..	19:15	..
Muine Bheag	Dep	..	06:50	07:42	08:45	11:58	14:00	15:45	..	19:31	..
Carlow	Arr	..	07:02	07:55	08:58	12:10	14:12	15:57	17:00	19:43	..
CARLOW	Dep	06:30	07:03	07:55	08:58	12:11	14:12	16:10	17:00	19:43	21:36
Athy	Dep	06:41	07:15	08:09	09:11	12:24	14:25	16:22	17:13	19:56	21:47
Kildare	Dep	07:01	07:34	..	09:30	12:43	14:45	16:42	17:36	20:15	22:06
Newbridge	Dep	07:08	07:41	08:33	..	12:49	14:52	22:12
Sallins & Naas	Dep	07:16	22:20
Hazelhatch & Celbridge	Dep	07:27	22:31
Adamstown	Dep	07:31	22:35
Clondalkin Fonthill	Dep	22:40
Park West & Cherry Orchard	Dep	22:43
DUBLIN Heuston B L A	Arr	07:44	08:07	09:00	10:00	13:16	15:21	17:12	18:05	20:45	22:52

		Sun Only	Sun Only	Sun Only	Sun Only
WATERFORD (Plunkett)	Dep	09:05	12:40	15:10	18:05
Thomastown	Dep	09:26	13:01	15:31	18:26
Kilkenny (MacDonagh)	Arr	09:41	13:16	15:46	18:41
Kilkenny (MacDonagh)	Dep	09:45	13:20	15:50	18:45
Muine Bheag	Dep	10:01	13:36	16:06	19:03
Carlow	Arr	10:13	13:48	16:18	19:15
CARLOW	Dep	10:15	13:48	16:18	19:15
Athy	Dep	10:29	14:01	16:31	19:30
Kildare	Dep	10:49	14:21	16:51	19:49
Newbridge	Dep	10:56	14:28	16:58	19:57
Sallins & Naas	Dep
Hazelhatch & Celbridge	Dep
Adamstown	Dep
Clondalkin Fonthill	Dep
Park West & Cherry Orchard	Dep
DUBLIN Heuston B L A	Arr	11:22	14:54	17:24	20:24

A Bus connection to/from Dublin Airport available nearby. **B** Bus Link (Route 145) to/from Dublin City Centre.

L LUAS Tram Link to/from Dublin City Centre and Connolly Station.  Limited Bicycle accommodation, check www.irishrail.ie.


Station platform gates will close 2 minutes prior to departure. Passengers should allow 1 hour transfer time between Connolly and Heuston Stations, when using LUAS or bus services.

follow us on



		Mon to Sat	Mon to Sat	Mon to Sat	Not on Fri	Fri Only	Fri Only	Mon to Sat	Mon to Sat	Mon to Sat	Mon to Sat	Mon to Sat	Mon to Sat	Mon to Sat	Mon to Sat	Mon to Sat	Mon to Sat	Not on Fri	Fri Only	Mon to Sat	Mon to Sat	Mon to Sat	Mon to Sat	Mon to Sat	Mon to Sat	
DUBLIN Heuston B L A	Dep	07:35	07:35	09:25	11:25	12:45	13:25	..	14:45	..	15:35	16:30	17:10	17:10	17:30	..	18:15	18:30	..	19:35	
Hazelhatch & Celbridge	Dep	
Sallins & Naas	Dep	17:46	
Newbridge	Dep	16:52	17:33	17:33	17:55	
Kildare	Dep	08:04	08:04	17:03	17:44	17:44	
Monasterevin	Dep	17:51	17:51	19:06	..	
Portarlington	Dep	08:16	08:16	10:03	12:03	13:23	14:06	..	15:23	..	16:17	..	17:59	17:59	18:13	19:15	..	20:15
Tullamore	Dep	08:32	08:32	10:19	12:19	13:40	14:23	..	15:41	..	16:35	17:30	18:15	18:15	18:31	..	19:09	20:36	
Clara	Dep	08:42	08:42	10:27	..	13:49	15:49	..	16:43	..	18:23	18:23	18:45	19:38	..	
ATHLONE	Arr	09:00	09:00	10:51	12:44	14:06	14:47	..	16:06	..	17:00	17:53	18:49	18:49	19:02	..	19:32	19:55	..	21:05	
ATHLONE	Dep	From Limerick	07:30	..	09:05	09:08	09:05	..	10:51	12:44	14:07	14:47	..	16:07	..	17:00	17:53	..	18:51	19:02	From Limerick	19:32	19:55	From Limerick	21:05	
Ballinasloe	Dep	..	07:44	..	09:19	..	09:19	..	11:07	13:01	..	15:03	17:17	18:10	19:19	20:12	21:22	
Woodlawn	Dep	..	08:01	..	09:29	..	09:29	13:10	..	15:13	17:26	18:20	21:31	
Attymon	Dep	..	08:07	..	09:36	..	09:36	..	11:22	
Athenry	Dep	07:49	08:14	09:05	09:46	..	09:46	10:53	11:32	13:23	..	15:26	15:56	..	16:55	17:41	18:33	19:40	20:13	..	20:32	21:22	21:44	
Oranmore	Dep	08:01	08:25	09:16	09:56	..	09:56	11:04	11:42	13:33	..	16:07	17:05	19:50	20:24	..	20:43	21:34	21:54	
GALWAY (Ceannt)	Arr	08:09	08:35	09:24	10:06	..	10:06	11:13	11:52	13:44	..	15:45	16:15	..	17:14	17:59	18:52	20:01	20:32	..	20:53	21:42	22:04	


Baile Átha Cliath - Gallimh - Luan go Satharn
Dublin - Galway - Monday to Saturday

A Bus connection to/from Dublin Airport available nearby. **B** Bus Link (Route 145) to/from Dublin City Centre. **L** LUAS Tram Link to/from Dublin City Centre and Connolly Station.  Limited Bicycle accommodation, check www.irishrail.ie. Station platform gates will close 2 minutes prior to departure. Passengers should allow 1 hour transfer time between Connolly and Heuston Stations, when using LUAS or bus services.

follow us on



		Sun Only	Sun Only	Sun Only	Sun Only	Sun Only	Sun Only	Sun Only	Sun Only	Sun Only	Sun Only	Sun Only	Sun Only	Sun Only
DUBLIN Heuston ^B ^L ^A	Dep	08:00	..	11:40	..	13:40	14:40	15:40	..	16:35	..	18:30	18:45	20:30
Hazelhatch & Celbridge	Dep
Sallins & Naas	Dep
Newbridge	Dep	14:03	18:54	..	20:52
Kildare	Dep	08:30	..	12:10	..	14:14	19:04	19:19	..
Monasterevin	Dep
Portarlington	Dep	08:41	..	12:21	..	14:26	15:18	17:13	..	19:18	19:30	21:10
Tullamore	Dep	08:57	..	12:44	..	14:50	15:42	16:35	..	17:30	..	19:36	19:54	21:26
Clara	Dep	09:06	..	12:52	..	14:58	15:50	16:44	..	17:40	21:34
ATHLONE	Arr	09:23	..	13:09	..	15:15	16:07	17:01	..	18:08	..	19:59	20:20	21:51
ATHLONE	Dep	09:23	From Limerick	13:10	From Limerick	15:17	16:08	17:02	From Limerick	18:09	From Limerick	19:59	20:22	21:52
Ballinasloe	Dep	09:39	..	13:25	16:23	18:24	20:37	22:07
Woodlawn	Dep	09:48	16:33	20:46	..
Attymon	Dep	09:55
Athenry	Dep	10:03	10:37	13:47	14:04	..	16:45	..	17:32	18:45	19:53	..	20:58	22:26
Oranmore	Dep	10:13	10:47	..	14:14	..	16:55	..	17:43	..	20:04	..	21:08	..
GALWAY (Ceannt)	Arr	10:24	10:55	14:05	14:23	..	17:08	..	17:51	19:08	20:12	..	21:19	22:44

^A Bus connection to/from Dublin Airport available nearby. ^B Bus Link (Route 145) to/from Dublin City Centre. ^L LUAS Tram Link to/from Dublin City Centre and Connolly Station.  Limited Bicycle accommodation, check www.irishrail.ie. Station platform gates will close 2 minutes prior to departure. Passengers should allow 1 hour transfer time between Connolly and Heuston Stations, when using LUAS or bus services.

		Sun Only	Sun Only	Sun Only	Sun Only	Sun Only	Sun Only	Sun Only	Sun Only	Sun Only	Sun Only	Sun Only	Sun Only	Sun Only	Sun Only	Sun Only
GALWAY (Ceannt)	Dep	08:05	From Westport	08:25	11:00	11:55	13:00	From Westport	15:05	From Westport	16:10	17:00	18:00	From Westport	18:30	19:25
Oranmore	Dep	..		08:32	11:06	12:02	..		15:11		16:17	..	18:06		18:37	19:32
Athenry	Dep	08:20	From Westport	08:46	11:18	12:18	13:17	From Westport	15:23	From Westport	16:32	17:22	18:18	From Westport	18:53	19:43
Attymon	Dep	13:24	..		15:35		17:26	18:26	19:55			
Woodlawn	Dep	08:32	From Westport	Limerick To	11:29	Limerick To	13:36	From Westport	15:35	From Westport	Limerick To	17:34	18:36	From Westport	19:55	
Ballinasloe	Dep	08:43			11:40		13:46		15:46			17:45	18:46		20:04	
ATHLONE	Arr	09:01	09:37	Limerick To	11:58	Limerick To	14:05	15:16	16:04	17:47	Limerick To	18:05	19:05	19:37	Limerick To	20:21
ATHLONE	Dep	09:02	09:38		11:59		14:06	15:18	16:08	17:48		18:09	19:06	19:39		..
Clara	Dep	09:26	09:54	Limerick To	12:14	Limerick To	14:22	15:33	16:23	18:03	Limerick To	18:25	19:22	..	Limerick To	..
Tullamore	Dep	09:35	10:03		..		12:22	..	14:31	15:43		16:34	18:12	..		18:34
Portarlinton	Dep	09:53	10:22	..	12:43	..	14:49	16:02	16:53	18:30	..	18:52	19:59	20:32
Monasterevin	Dep
Kildare	Dep	10:07	12:59	17:07	18:45	..	19:07
Newbridge	Dep	19:14
Sallins & Naas	Dep
Hazelhatch & Celbridge	Dep
DUBLIN Heuston B L A	Arr	10:37	11:04	..	13:28	..	15:28	16:42	17:37	19:15	..	19:41	20:41	21:11

A Bus connection to/from Dublin Airport available nearby. **B** Bus Link (Route 145) to/from Dublin City Centre. **L** LUAS Tram Link to/from Dublin City Centre and Connolly Station. **A** Limited Bicycle accommodation, check www.irishrail.ie. Station platform gates will close 2 minutes prior to departure. Passengers should allow 1 hour transfer time between Connolly and Heuston Stations, when using LUAS or bus services.

follow us on



		Mon to Sat	Mon to Sat	Mon to Sat	Not on Fri	Not on Fri	Fri Only	Mon to Sat	Mon to Sat	Mon to Sat	Mon to Sat	Mon to Sat	Mon to Sat	Mon to Sat	Mon to Sat	Mon to Sat	Mon to Sat	Mon to Sat	Fri Only	Mon to Sat	Mon to Sat	Mon to Sat	
DUBLIN Heuston B L A	Dep	07:35	..	07:35	12:45	14:45	17:10	..	18:15	..
Newbridge	Dep	17:33
Kildare	Dep	08:04	..	08:04	17:44
Monasterevin	Dep	17:51
Portarlinton	Dep	08:16	..	08:16	13:23	15:23	17:59
Tullamore	Dep	08:32	..	08:32	13:40	15:41	18:15	..	19:09	..
Clara	Dep	08:42	..	08:42	13:49	15:49	18:23
ATHLONE	Arr	09:00	..	09:00	14:06	16:06	18:49	..	19:32	..
ATHLONE	Dep	09:05	09:08	09:08	14:07	16:07	18:51	..	19:32	..
Roscommon	Dep	09:30	09:30	09:30	14:32	16:31	19:39	..	20:02	..
Castlerea	Dep	09:48	09:48	09:48	14:50	16:49	19:57	..	20:20	..
Ballyhaunis	Dep	10:02	10:02	10:02	15:04	17:03	20:11	..	20:33	..
Claremorris	Dep	10:19	10:19	10:19	15:20	17:19	20:26	..	20:49	..
BALLINA	Dep	07:05	..	09:35	To Galwly	13:00	..	15:05	17:00	18:10	20:32
Foxford	Dep	07:16	..	09:46		13:11	..	15:16	17:11	18:21	20:43	..
MANULLA JUNCTION	Arr	07:32	..	10:02	..	10:32	10:32	..	13:27	..	15:32	15:33	..	17:27	17:32	..	18:37	20:59	21:02	..
MANULLA JUNCTION	Dep	..	07:37	10:33	10:33	10:39	..	13:33	..	15:34	15:37	..	17:33	17:34	..	18:42	21:03	21:05
Foxford	Dep	..	07:51	10:53	..	13:47	15:51	17:48	..	18:56	21:19
BALLINA	Arr	..	08:04	11:06	..	14:00	16:04	18:01	..	19:09	21:32
Castlebar	Dep	10:39	10:39	15:40	17:39	20:44	..	21:09	..
WESTPORT	Arr	10:56	10:56	15:57	17:56	21:01	..	21:26	..

A Bus connection to/from Dublin Airport available nearby. **B** Bus Link (Route 145) to/from Dublin City Centre.
L LUAS Tram Link to/from Dublin City Centre and Connolly Station. **db** Limited Bicycle accommodation, check www.irishrail.ie.
 Station platform gates will close 2 minutes prior to departure.
 Passengers should allow 1 hour transfer time between Connolly and Heuston Stations, when using LUAS or bus services.

follow us on



		Sun Only	Sun Only	Sun Only	Sun Only	Sun Only	Sun Only	Sun Only	Sun Only	Sun Only	Sun Only	Sun Only	Sun Only	Sun Only	Sun Only	Sun Only	Sun Only	Sun Only
DUBLIN Heuston B T A	Dep	08:00	13:40	15:40	18:30	..
Newbridge	Dep	14:03	18:54	..
Kildare	Dep	08:30	14:14	19:04	..
Monasterevin	Dep
Portarlinton	Dep	08:41	14:26	19:18	..
Tullamore	Dep	08:57	14:50	16:35	19:36	..
Clara	Dep	09:06	14:58	16:44
ATHLONE	Arr	09:23	15:15	17:01	19:59	..
ATHLONE	Dep	09:23	..	09:40	15:17	17:02	19:59	..
Roscommon	Dep	10:02	15:42	17:38	20:24	..
Castlearea	Dep	10:20	16:00	17:56	20:42	..
Ballyhaunis	Dep	10:34	16:14	18:10	20:56	..
Claremorris	Dep	10:50	16:30	18:29	21:11	..
BALLINA	Dep	07:40	..	To Galwy	10:35	13:20	..	15:40	17:40	20:55
Foxford	Dep	07:51	..		10:46	13:31	..	15:51	17:51	21:06
MANULLA JUNCTION	Arr	08:07	11:02	11:03	..	13:47	..	16:07	16:44	..	18:07	18:42	..	21:22	21:25	..
MANULLA JUNCTION	Dep	..	08:13	11:04	11:07	..	13:52	..	16:44	16:47	..	18:43	18:45	..	21:25	21:27
Foxford	Dep	..	08:27	11:21	..	14:06	17:01	18:59	21:41
BALLINA	Dep	..	08:40	11:34	..	14:19	17:14	19:12	21:54
Castlebar	Dep	11:10	16:51	18:49	21:32	..
WESTPORT	Arr	11:27	17:08	19:06	21:49	..

A Bus connection to/from Dublin Airport available nearby. **B** Bus Link (Route 145) to/from Dublin City Centre.
T LUAS Tram Link to/from Dublin City Centre and Connolly Station. **db** Limited Bicycle accommodation, check www.irishrail.ie.
 Station platform gates will close 2 minutes prior to departure.
 Passengers should allow 1 hour transfer time between Connolly and Heuston Stations, when using LUAS or bus services.

		Mon to Fri	Sat Only	Mon to Sat	Mon to Sat	Mon to Sat	Mon to Sat	Mon to Sat	Mon to Sat	Mon to Sat	Mon to Sat	Mon to Sat	Mon to Sat	Mon to Sat	Mon to Sat	Mon to Sat	Mon to Sat	Mon to Sat	Mon to Sat	Mon to Sat	Mon to Sat			
WESTPORT	Dep	05:20	07:15	09:45	13:10	18:20
Castlebar	Dep	05:33	07:29	09:58	13:23	18:33
BALLINA	Dep	07:05	09:35	13:00	15:05	..	17:00	..	18:10	20:32
Foxford	Dep	07:16	09:46	13:11	15:16	..	17:11	..	18:21	20:43
MANULLA JUNCTION	Arr	07:32	07:35	..	10:02	10:04	..	13:27	13:29	..	15:32	..	17:27	..	18:37	18:39	..	20:59
MANULLA JUNCTION	Dep	07:35	07:37	..	10:05	10:39	..	13:30	13:33	..	15:37	..	17:34	..	18:39	18:42	..	21:05
Foxford	Dep	07:51	10:53	13:47	..	15:51	..	17:48	18:56	..	21:19
BALLINA	Arr	08:04	11:06	14:00	..	16:04	..	18:01	19:09	..	21:32
Claremorris	Dep	05:50	07:49	10:21	13:44	18:53
Ballyhaunis	Dep	06:02	08:03	10:33	13:57	19:05
Castlerea	Dep	06:15	08:16	10:47	14:11	19:19
Roscommon	Dep	06:35	08:37	11:07	14:32	19:39
ATHLONE	Arr	06:59	09:01	11:31	14:55	20:11
ATHLONE	Dep	07:00	07:00	..	09:03	11:32	14:56	20:12
Clara	Dep	07:14	07:14	..	09:19	11:47	15:14	20:27
Tullamore	Dep	07:22	07:22	..	09:28	11:56	15:23	20:35
Portarlinton	Dep	07:41	07:41	..	09:47	12:25	15:48	20:53
Monasterevin	Dep	07:47	07:47
Kildare	Dep	07:57	07:57
Newbridge	Dep	08:04	08:04
DUBLIN Heuston B L A	Arr	08:31	08:31	..	10:27	13:04	16:29	21:36

A Bus connection to/from Dublin Airport available nearby. **B** Bus Link (Route 145) to/from Dublin City Centre.

L LUAS Tram Link to/from Dublin City Centre and Connolly Station. **db** Limited Bicycle accommodation, check www.irishrail.ie.

Station platform gates will close 2 minutes prior to departure.

Passengers should allow 1 hour transfer time between Connolly and Heuston Stations, when using LUAS or bus services.

follow us on



		Sun Only	Sun Only	Sun Only	Sun Only	Sun Only	Sun Only	Sun Only	Sun Only	Sun Only	Sun Only	Sun Only	Sun Only	Sun Only	Sun Only	Sun Only	Sun Only
WESTPORT	Dep	..	07:50	13:30	15:50	17:50
Castlebar	Dep	..	08:04	13:43	16:04	18:03
BALLINA	Dep	07:40	10:35	..	13:20	15:40	17:40	20:55	..
Foxford	Dep	07:51	10:46	..	13:31	15:51	17:51	21:06	..
MANULLA JUNCTION	Arr	08:07	08:10	..	11:02	..	13:47	13:49	..	16:07	16:10	..	18:07	18:09	..	21:22	..
MANULLA JUNCTION	Dep	..	08:10	08:13	..	11:07	..	13:49	13:52	..	16:11	16:47	..	18:09	18:45	..	21:27
Foxford	Dep	08:27	..	11:21	14:06	17:01	18:59	..	21:41
BALLINA	Dep	08:40	..	11:34	14:19	17:14	19:12	..	21:54
Claremorris	Dep	..	08:24	14:03	16:31	18:27
Ballyhaunis	Dep	..	08:38	14:17	16:44	18:40
Castlerea	Dep	..	08:52	14:31	16:58	18:53
Roscommon	Dep	..	09:13	14:52	17:19	19:13
ATHLONE	Arr	..	09:37	15:16	17:47	19:37
ATHLONE	Dep	..	09:38	15:18	17:48	19:39
Clara	Dep	..	09:54	15:33	18:03
Tullamore	Dep	..	10:03	15:43	18:12	20:14
Portarlinton	Dep	..	10:22	16:02	18:30	20:32
Monasterevin	Dep
Kildare	Dep	18:45
Newbridge	Dep
DUBLIN Heuston B L A	Arr	..	11:04	16:42	19:15	21:11

A Bus connection to/from Dublin Airport available nearby. **B** Bus Link (Route 145) to/from Dublin City Centre.
L LUAS Tram Link to/from Dublin City Centre and Connolly Station. **db** Limited Bicycle accommodation, check www.irishrail.ie.
 Station platform gates will close 2 minutes prior to departure.
 Passengers should allow 1 hour transfer time between Connolly and Heuston Stations, when using LUAS or bus services.



Baile Átha Cliath - Cill Dara - Port Laoise
Luan go Domhnaigh (gan saoire phoiblí san áireamh)
Bailí ó 26.09.2021 go bhfógrófar a mhalairt

Dublin - Kildare - Portlaoise
Monday to Sunday (excluding public holidays)
Valid from 26.09.2021 until further notice



Baile Átha Cliath - Cill Dara - Port Laoise - Luan go Satharn (gan saoire phoiblí san áireamh) - Baili ó 26.09.2021 go bhfógrófar a mhalairt
 Dublin - Kildare - Portlaoise - Monday to Saturday (excluding public holidays) - Valid from 26.09.2021 until further notice

		Mon to Sat	Mon to Fri	Mon to Sat	Mon to Sat	Mon to Sat	Mon to Sat	Mon to Sat	Mon to Fri	Mon to Fri	Mon to Sat	Mon to Fri	Mon to Sat	Mon to Sat	Mon to Sat	Mon to Fri	Mon to Sat	Mon to Sat	Mon to Fri	Mon to Sat	Mon to Sat
GRAND CANAL DOCK	Dep	07:26	07:48	..	08:10	09:11	09:48
DUBLIN Pearse	Dep	07:29	07:50	..	08:13	09:14	09:51
Tara Street ^A	Dep	07:31	07:52	..	08:15	09:16	09:53
DUBLIN Connolly ^{L A}	Dep	07:36	07:56	..	08:19	09:20	09:57
Drumcondra	Dep	07:41	08:01	..	08:25	09:26	10:03
DUBLIN Heuston ^{B L A}	Dep	06:25	06:35	07:00	07:20	07:25	07:35	08:22	..	09:00	09:20	09:25	..	10:00	10:15	..	10:20	11:00	..
Park West & Cherry Orchard	Dep	..	06:43	07:33	..	07:57	08:17	08:30	08:42	..	09:28	..	09:44	10:20	10:28
Clondalkin Fonthill	Dep	..	06:46	07:36	08:33	09:31	..	09:47	10:23	10:31
Adamstown	Dep	..	06:51	07:41	08:38	09:36	..	09:52	10:28	10:36
Hazelhatch & Celbridge	Arr	06:37	06:55	07:45	..	08:05	08:27	08:42	09:40	..	09:58	10:35	10:40
<i>Hazelhatch & Celbridge</i> [🚌]		<i>06:55</i>	<i>07:55</i>	<i>08:48</i>
<i>Celbridge (Salesian Coll.)</i> [🚌]		<i>07:10</i>	<i>08:10</i>	<i>09:05</i>
Sallins & Naas	Dep	06:47	07:05	07:55	08:52	09:50	10:50
<i>Sallins & Naas</i> [🚌]		<i>06:50</i>	<i>07:58</i>	<i>08:55</i>	<i>09:52</i>	<i>10:55</i>
<i>Naas (Poplar Square)</i> [🚌]		<i>07:00</i>	<i>08:18</i>	<i>09:15</i>	<i>10:12</i>	<i>11:15</i>
NEWBRIDGE	Arr	06:54	07:13	..	07:41	08:03	08:59	09:04	..	09:57	10:57
KILDARE	Arr	07:04	07:51	08:13	08:04	09:10	10:08	10:43	..	11:07
Monasterevin	Dep	07:13	08:21	09:18	10:16	11:15
Portarlinton	Dep	07:19	08:28	08:16	09:24	10:22	10:03	11:22
PORTLAOISE	Arr	07:29	..	07:46	..	08:37	09:34	..	09:44	10:32	10:44	11:33	11:44	..

[🚌] Connecting Bus ★ Bus also operates to Irish National Stud (arrives 10 minutes later).

Times in *italics* denote bus departure times.

^A Bus Link to/from Dublin Airport available nearby.

^B Bus Link (Route 145) to/from Dublin City Centre.

^L LUAS Tram link to/from Dublin City & Connolly Station.

follow us on



Baile Átha Cliath - Cill Dara - Port Laoise - Luan go Satharn (gan saoire phoiblí san áireamh) - Bailí ó 26.09.2021 go bhfógrófar a mhalairt
Dublin - Kildare - Portlaoise - Monday to Saturday (excluding public holidays) - Valid from 26.09.2021 until further notice

		Mon to Fri	Mon to Sat	Mon to Sat	Mon to Fri	Mon to Sat	Mon to Sat	Mon to Sat	Mon to Sat	Mon to Fri	Mon to Sat	Mon to Sat	Mon to Sat	Mon to Fri	Mon to Sat	Mon to Sat	Mon to Fri	Mon to Sat	Mon to Sat	Mon to Sat
GRAND CANAL DOCK	Dep	10:30	11:30	12:30	13:30	14:30
DUBLIN Pearse	Dep	10:33	11:33	12:33	13:33	14:33
Tara Street ^A	Dep	10:35	11:35	12:35	13:35	14:35
DUBLIN Connolly ^{LA}	Dep	10:39	11:39	12:39	13:39	14:39
Drumcondra	Dep	10:45	11:45	12:45	13:45	14:45
DUBLIN Heuston ^{B LA}	Dep	..	11:20	11:25	..	12:00	12:15	12:45	13:00	..	13:20	13:25	14:00	..	14:15	14:45	..	15:10	15:25	15:30
Park West & Cherry Orchard	Dep	11:04	11:28	..	12:00	..	12:22	13:03	13:27	14:03	14:23	..	15:03	..	15:33	..
Clondalkin Fonthill	Dep	11:08	11:31	..	12:04	..	12:26	13:06	13:31	14:06	14:26	..	15:07	..	15:36	..
Adamstown	Dep	11:12	11:36	..	12:09	..	12:31	13:11	13:36	14:11	14:31	..	15:12	..	15:41	..
Hazelhatch & Celbridge	Arr	11:19	11:40	..	12:15	..	12:35	13:17	13:40	14:15	14:35	..	15:18	..	15:45	..
<i>Hazelhatch & Celbridge</i> [🚌]		13:45	15:50	..
<i>Celbridge (Salesian Coll.)</i> [🚌]		13:50	16:15	..
Sallins & Naas	Dep	..	11:50	12:45	13:50	14:24	14:45	15:55	..
<i>Sallins & Naas</i> [🚌]		12:55	13:52	16:00	..
<i>Naas (Poplar Square)</i> [🚌]		13:15	14:15	16:25	..
NEWBRIDGE	Arr	..	11:57	12:52	13:57	14:34	14:52	15:31	16:02	..
KILDARE	Arr	..	12:08	13:02	14:07	15:02	15:42	16:12	15:59
Monasterevin	Dep	..	12:16	13:11	14:16	15:11	16:21	..
Portarlinton	Dep	..	12:22	12:03	13:17	13:23	14:22	14:06	15:17	15:23	16:27	16:10
PORTLAOISE	Arr	..	12:31	12:44	13:27	..	13:44	..	14:32	..	14:44	..	15:27	16:37	16:20

[🚌] Connecting Bus ★ Bus also operates to Irish National Stud (arrives 10 minutes later).

Times in *italics* denote bus departure times.

^A Bus Link to/from Dublin Airport available nearby.

^B Bus Link (Route 145) to/from Dublin City Centre.

^L LUAS Tram link to/from Dublin City & Connolly Station.

follow us on



Baile Átha Cliath - Cill Dara - Port Laoise - Luan go Satharn (gan saoire phoiblí san áireamh) - Bailí ó 26.09.2021 go bhfógrófar a mhalairt
 Dublin - Kildare - Portlaoise - Monday to Saturday (excluding public holidays) - Valid from 26.09.2021 until further notice

		Mon to Sat	Mon to Fri	Mon to Sat	Mon to Sat	Mon to Sat	Mon to Sat	Mon to Fri	Mon to Sat	Mon to Fri	Mon to Sat	Mon to Fri	Mon to Sat	Mon to Sat	Mon to Sat	Mon to Fri	Mon to Fri	Mon to Fri	Mon to Sat	Mon to Sat
GRAND CANAL DOCK	Dep	..	15:20	16:28	..	16:41	..	16:59	17:32	..	18:00
DUBLIN Pearse	Dep	..	15:23	16:31	..	16:44	..	17:02	17:35	..	18:03
Tara Street ^A	Dep	..	15:25	16:33	..	16:47	..	17:04	17:37	..	18:05
DUBLIN Connolly ^{L A}	Dep	..	15:29	16:37	..	16:52	..	17:08	17:42	..	18:09
Drumcondra	Dep	..	15:35	16:43	..	16:57	..	17:13	17:47	..	18:14
DUBLIN Heuston ^{B L A}	Dep	15:35	..	16:20	16:25	16:30	16:40	..	17:10	..	17:25	..	17:27	17:30	17:35	..	18:05	..	18:25	18:30
Park West & Cherry Orchard	Dep	..	15:53	16:28	17:01	..	17:15	..	17:30	17:35	18:03	18:13	18:32	18:35	..
Clondalkin Fonthill	Dep	..	15:56	16:31	17:05	..	17:18	..	17:33	17:39	18:07	18:16	18:35	18:39	..
Adamstown	Dep	..	16:01	16:36	17:10	..	17:23	..	17:38	17:44	18:12	18:21	18:41	18:44	..
Hazelhatch & Celbridge	Arr	..	16:05	16:40	16:53	17:16	..	17:27	..	17:44	17:48	18:16	18:25	18:46	18:48	..
<i>Hazelhatch & Celbridge</i> ^B		16:55	17:50	17:50	18:30	18:30	19:00	19:00	..
<i>Celbridge (Salesian Coll.)</i> ^B		17:10	18:05	18:05	18:45	18:45	19:15	19:15	..
Sallins & Naas	Dep	16:51	17:03	17:37	17:57	17:46	17:52	18:25	18:36	..	18:58	..
<i>Sallins & Naas</i> ^B		16:55	17:05	17:55	18:28	19:00	..
<i>Naas (Poplar Square)</i> ^B		17:20	17:30	18:20	18:50	19:20	..
NEWBRIDGE	Arr	16:59	..	16:51	17:33	17:45	18:05	17:55	..	18:34	18:44	..	19:05	..
KILDARE	Arr	17:09	..	17:02	17:20	..	17:44	..	17:54	..	18:15	..	18:09	..	18:55	..	19:16	..
Monasterevin	Dep	17:18	16:59	17:51	18:23	19:25	19:06
Portarlinton	Dep	16:17	..	17:24	17:05	17:59	..	18:05	..	18:30	18:13	19:06	..	19:30	19:15
PORTLAOISE	Arr	17:34	17:15	18:15	..	18:39	19:16	..	19:40	..

^B Connecting Bus ★ Bus also operates to Irish National Stud (arrives 10 minutes later).

Times in *italics* denote bus departure times.

^A Bus Link to/from Dublin Airport available nearby.

^B Bus Link (Route 145) to/from Dublin City Centre.

^L LUAS Tram link to/from Dublin City & Connolly Station.

follow us on



Baile Átha Cliath - Cill Dara - Port Laoise - Luan go Satharn (gan saoire phoiblí san áireamh) - Bailí ó 26.09.2021 go bhfógrófar a mhalairt
Dublin - Kildare - Portlaoise - Monday to Saturday (excluding public holidays) - Valid from 26.09.2021 until further notice

		Mon to Sat	Mon to Fri	Mon to Sat	Mon to Fri	Mon to Sat	Mon to Sat	Mon to Fri	Mon to Sat	Mon to Fri	Mon to Sat	Mon to Sat	Mon to Fri	Mon to Sat	Mon to Fri	Mon to Sat	Mon to Fri	Mon to Sat	Mon to Fri
GRAND CANAL DOCK	Dep	..	18:17	..	18:40	19:13	..	19:43	20:30	..	21:30	..	22:30	..	23:22
DUBLIN Pearse	Dep	..	18:20	..	18:43	19:16	..	19:46	20:33	..	21:33	..	22:33	..	23:25
Tara Street	Dep	..	18:22	..	18:45	19:18	..	19:48	20:36	..	21:35	..	22:35	..	23:27
DUBLIN Connolly	Dep	..	18:26	..	18:49	19:22	..	19:52	20:40	..	21:39	..	22:39	..	23:31
Drumcondra	Dep	..	18:32	..	18:55	19:27	..	19:58	20:45	..	21:45	..	22:45	..	23:37
DUBLIN Heuston	Dep	18:35	..	19:00	..	19:05	19:35	..	19:45	..	20:15	21:00	..	21:05	..	22:10	..	23:10	..
Park West & Cherry Orchard	Dep	..	18:50	..	19:11	19:15	..	19:47	19:53	20:13	20:22	..	21:04	21:13	22:06	22:18	23:01	23:18	23:52
Clondalkin Fonthill	Dep	..	18:53	..	19:15	19:19	..	19:50	19:56	20:17	20:26	..	21:07	21:16	22:10	22:21	23:05	23:21	23:56
Adamstown	Dep	..	18:58	..	19:20	19:24	..	19:55	20:01	20:22	20:31	..	21:12	21:21	22:15	22:26	23:10	23:26	00:01
Hazelhatch & Celbridge	Arr	..	19:02	..	19:25	19:28	..	20:01	20:05	20:28	20:35	..	21:19	21:25	22:21	22:30	23:16	23:30	00:06
<i>Hazelhatch & Celbridge</i>	
<i>Celbridge (Salesian Coll.)</i>	
Sallins & Naas	Dep	..	19:12	19:37	20:15	..	20:45	21:35	..	22:40	..	23:40	..
<i>Sallins & Naas</i>	
<i>Naas (Poplar Square)</i>	
NEWBRIDGE	Arr	18:56	19:21	19:45	20:22	..	20:52	21:42	..	22:47	..	23:47	..
KILDARE	Arr	19:07	19:55	20:32	..	21:02	21:52	..	22:57	..	23:58	..
Monasterevin	Dep	20:04	20:41	22:01	..	23:06
Portarlinton	Dep	20:10	20:15	..	20:47	22:07	..	23:12
PORTLAOISE	Arr	19:46	..	20:20	20:57	21:44	..	22:17	..	23:22

 Connecting Bus ★ Bus also operates to Irish National Stud (arrives 10 minutes later).

Times in *italics* denote bus departure times.

A Bus Link to/from Dublin Airport available nearby.

B Bus Link (Route 145) to/from Dublin City Centre.

L LUAS Tram link to/from Dublin City & Connolly Station.

follow us on



Baile Átha Cliath - Cill Dara - Port Laoise - Domhnaigh (gan saoire phoiblí san áireamh) - Bailí ó 26.09.2021 go bhfógrófar a mhalairt
Dublin - Kildare - Portlaoise - Sunday (excluding public holidays) - Valid from 26.09.2021 until further notice

		Sun Only	Sun Only	Sun Only	Sun Only	Sun Only	Sun Only	Sun Only	Sun Only	Sun Only	Sun Only	Sun Only	Sun Only	Sun Only	Sun Only	Sun Only	Sun Only
DUBLIN Heuston B T A	Dep	08:00	08:30	09:10	10:00	10:15	11:25	11:40	12:15	13:25	13:40	14:10	14:30	14:40	15:25	16:30	16:35
Park West & Cherry Orchard	Dep	10:22	12:22	14:37	16:37	..
Clondalkin Fonthill	Dep	10:26	12:26	14:41	16:41	..
Adamstown	Dep	10:31	12:31	14:46	16:46	..
Hazelhatch & Celbridge	Arr	10:35	12:35	14:50	16:50	..
Sallins & Naas	Dep	10:45	12:45	15:01	17:00	..
NEWBRIDGE	Arr	09:31	..	10:52	12:52	..	14:02	14:31	15:08	17:07	..
KILDARE	Arr	08:29	..	09:42	..	11:03	11:53	12:09	13:04	13:53	14:13	14:42	15:19	..	15:53	17:18	..
Monasterevin	Dep
Portarlinton	Dep	08:41	12:05	12:21	..	14:05	14:26	15:18	16:05	..	17:13
PORTLAOISE	Arr	..	09:13	..	10:44	..	12:15	14:15	16:15

A Bus connection to/from Dublin Airport available nearby.

L LUAS Tram link to/from Dublin City & Connolly Station.

B Bus Link (Route 145) to/from Dublin City Centre.

follow us on



Baile Átha Cliath - Cill Dara - Port Laoise - Domhnaigh (gan saoire phoiblí san áireamh) - Bailí ó 26.09.2021 go bhfógrófar a mhalairt
Dublin - Kildare - Portlaoise - Sunday (excluding public holidays) - Valid from 26.09.2021 until further notice

		Sun Only	Sun Only	Sun Only	Sun Only	Sun Only	Sun Only	Sun Only	Sun Only	Sun Only	Sun Only	Sun Only
DUBLIN Heuston B L A	Dep	17:45	18:25	18:30	18:40	18:45	18:55	19:05	19:25	20:30	21:00	21:10
Park West & Cherry Orchard	Dep	19:02
Clondalkin Fonthill	Dep	19:06
Adamstown	Dep	19:11
Hazelhatch & Celbridge	Arr	19:15
Sallins & Naas	Dep	19:26	..	19:41
NEWBRIDGE	Arr	18:06	18:46	18:54	19:35	..	19:50	20:52	..	21:31
KILDARE	Arr	18:17	18:57	19:04	19:09	19:18	20:01	21:42
Monasterevin	Dep	..	19:05	20:09
Portarlinton	Dep	..	19:11	19:18	..	19:30	..	19:42	20:15	21:10	21:36	21:53
PORTLAOISE	Arr	..	19:21	20:26	22:04

A Bus connection to/from Dublin Airport available nearby.
L LUAS Tram link to/from Dublin City & Connolly Station.

B Bus Link (Route 145) to/from Dublin City Centre.

follow us on



Port Laoise - Cill Dara - Baile Átha Cliath - Luan go Satharn (gan saoire phoiblí san áireamh) - Bailí ó 26.09.2021 go bhfógrófar a mhalairt
 Portlaoise - Kildare - Dublin - Monday to Saturday (excluding public holidays) - Valid from 26.09.2021 until further notice

		Mon to Sat	Mon to Sat	Mon to Fri	Mon to Sat	Mon to Sat	Mon to Sat	Mon to Sat	Mon to Sat	Mon to Fri	Mon to Sat	Mon to Fri	Mon to Sat	Mon to Sat	Mon to Sat	Mon to Fri	Mon to Sat	Mon to Sat	Mon to Sat	Mon to Sat	Mon to Fri	Mon to Sat
PORTLAOISE	Dep	..	08:12	09:02	..	09:13	10:25	11:13	11:25	12:25	..	12:25	..	13:17
Portarlinton	Dep	..	08:21	..	09:07	09:22	09:47	..	10:34	..	11:15	..	11:34	..	12:25	..	12:34	12:57
Monasterevin	Dep	..	08:27	09:28	10:40	11:40	12:40
KILDARE	Dep	..	08:37	09:30	09:39	10:50	11:50	12:43	12:50
NEWBRIDGE	Dep	08:33	08:44	09:09	..	09:28	..	09:45	10:57	11:57	12:49	12:57
<i>Naas (Poplar Square)</i>		..	08:20	09:25	10:35	12:35
<i>Sallins & Naas</i>		..	08:45	09:45	10:55	12:55
Sallins & Naas	Dep	..	08:52	09:17	09:28	09:53	11:05	12:05	13:05
<i>Celbridge (Salesian Coll.)</i>		..	08:30
<i>Hazelhatch & Celbridge</i>		..	08:45
Hazelhatch & Celbridge	Dep	..	09:02	09:27	10:04	..	10:32	11:15	11:35	12:15	12:35	13:15	..	13:35	..
Adamstown	Dep	..	09:07	09:32	10:08	..	10:37	11:20	11:40	12:20	12:40	13:20	..	13:40	..
Clondalkin Fonthill	Dep	..	09:11	09:36	10:13	..	10:41	11:24	11:45	12:24	12:44	13:24	..	13:44	..
Park West & Cherry Orchard	Dep	..	09:14	09:39	10:16	..	10:44	11:27	11:49	12:27	12:47	13:27	..	13:47	..
DUBLIN Heuston B L A	Arr	09:00	09:23	..	09:50	09:57	10:00	10:24	10:27	..	11:36	..	11:54	12:00	12:36	..	13:04	13:16	13:36	13:39	..	14:06
Drumcondra	Dep	09:56	11:01	..	12:06	13:04	14:06	..
DUBLIN Connolly L A	Arr	10:01	11:10	..	12:12	13:09	14:12	..
Tara Street A	Arr	10:04	11:14	..	12:15	13:12	14:15	..
DUBLIN Pearse	Arr	10:09	11:16	..	12:18	13:15	14:18	..
GRAND CANAL DOCK	Arr	10:13	11:20	..	12:22	13:19	14:22	..

Connecting Bus

Bus also operates from Irish National Stud (departs 10 minutes earlier).

Times in *italics* denote bus departure times.

A Bus Link to/from Dublin Airport available nearby.

B Bus Link (Route 145) to/from Dublin City Centre.

L LUAS Tram link to/from Dublin City & Connolly Station.

follow us on



Port Laoise - Cill Dara - Baile Átha Cliath - Luan go Satharn (gan saoire phoiblí san áireamh) - Bailí ó 26.09.2021 go bhfógrófar a mhalairt
 Portlaoise - Kildare - Dublin - Monday to Saturday (excluding public holidays) - Valid from 26.09.2021 until further notice

		Mon to Sat	Mon to Fri	Mon to Sat	Mon to Sat	Mon to Sat	Mon to Fri	Mon to Sat	Mon to Sat	Mon to Fri	Mon to Sat	Mon to Sat	Mon to Fri	Mon to Sat	Mon to Sat	Mon to Fri	Mon to Sat	Mon to Sat	Fri & Sat Only	Mon to Fri	Mon to Sat	
PORTLAOISE	Dep	13:25	..	14:13	..	14:28	15:13	..	15:25	16:25	17:13	17:25	
Portarlinton	Dep	13:34	14:37	..	15:09	15:34	15:48	16:34	..	16:53	17:34	
Monasterevin	Dep	13:40	14:43	15:40	16:40	17:40	
KILDARE	Dep	13:50	14:45	14:53	15:50	16:42	16:50	..	17:07	..	17:36	..	17:50	
NEWBRIDGE	Dep	13:57	14:52	15:00	15:08	15:57	16:57	..	17:14	17:57	
<i>Naas (Poplar Square)</i>		<i>13:30</i>	<i>14:30</i>	<i>15:30</i>	<i>16:30</i>	<i>17:20</i>	
<i>Sallins & Naas</i>		<i>13:50</i>	<i>14:50</i>	<i>15:55</i>	<i>16:55</i>	<i>17:45</i>	
Sallins & Naas	Dep	14:05	15:08	15:16	16:05	17:05	18:05	
<i>Celbridge (Salesian Coll.)</i>		<i>13:30</i>	<i>15:33</i>	<i>15:33</i>	..	<i>16:40</i>	..	<i>16:40</i>	<i>17:20</i>	..
<i>Hazelhatch & Celbridge</i>		<i>13:45</i>	<i>15:48</i>	<i>15:48</i>	..	<i>16:55</i>	..	<i>16:55</i>	<i>17:35</i>	..
Hazelhatch & Celbridge	Dep	14:15	14:30	15:18	15:50	16:15	..	16:58	..	17:15	17:30	17:52	18:15
Adamstown	Dep	14:20	14:35	15:23	16:20	17:20	18:20
Clondalkin Fonthill	Dep	14:24	14:39	15:27	16:24	17:24	18:24
Park West & Cherry Orchard	Dep	14:27	14:42	15:30	15:33	15:58	16:27	..	17:06	..	17:27	17:38	18:00	18:27
DUBLIN Heuston B D A	Arr	14:36	..	15:00	15:21	15:39	..	15:48	15:59	..	16:36	16:29	..	17:12	17:37	..	17:40	18:01	18:05	18:36
Drumcondra	Dep	..	15:00	15:49	16:15	17:23	17:55	18:16	..
DUBLIN Connolly D A	Arr	..	15:06	15:54	16:20	17:28	18:00	18:22	..
Tara Street A	Arr	..	15:10	15:57	16:23	17:32	18:03	18:25	..
DUBLIN Pearse	Arr	..	15:12	16:00	16:26	17:34	18:06	18:29	..
GRAND CANAL DOCK	Arr	..	15:16	16:31	17:38	18:10	18:33	..

Connecting Bus

Bus also operates from Irish National Stud (departs 10 minutes earlier).

Times in *italics* denote bus departure times.

A Bus Link to/from Dublin Airport available nearby.

B Bus Link (Route 145) to/from Dublin City Centre.

D LUAS Tram link to/from Dublin City & Connolly Station.

follow us on ...



Port Laoise - Cill Dara - Baile Átha Cliath - Luan go Satharn (gan saoire phoiblí san áireamh) - Bailí ó 26.09.2021 go bhfógrófar a mhalairt
 Portlaoise - Kildare - Dublin - Monday to Saturday (excluding public holidays) - Valid from 26.09.2021 until further notice

		Mon to Fri	Mon to Sat	Mon to Fri	Mon to Sat	Mon to Fri	Mon to Sat	Mon to Sat	Mon to Sat	Mon to Sat	Mon to Fri	Mon to Sat	Mon to Fri	Mon to Sat	Mon to Fri	Mon to Sat	Mon to Fri	Mon to Sat	Mon to Sat	Mon to Fri	Mon to Sat	Mon to Sat
PORTLAOISE	Dep	..	18:18	..	18:28	19:17	19:25	20:19	20:33	21:14	21:25	22:17	22:30	
Portarlinton	Dep	18:37	..	19:15	..	19:34	20:42	20:53	..	21:14	..	21:34	22:39	
Monasterevin	Dep	18:43	19:40	20:48	21:40	22:45	
KILDARE	Dep	18:53	..	19:28	..	19:50	20:15	20:58	21:50	22:06	22:55
NEWBRIDGE	Dep	18:10	19:00	..	19:34	..	19:57	21:05	21:57	22:12	23:02
<i>Naas (Poplar Square)</i>		18:40
<i>Sallins & Naas</i>		19:00
Sallins & Naas	Dep	18:18	19:08	20:05	21:13	22:05	22:20	23:10
<i>Celbridge (Salesian Coll.)</i>		18:15	18:45
<i>Hazelhatch & Celbridge</i>		18:30	19:00
Hazelhatch & Celbridge	Dep	18:54	19:18	19:32	20:15	..	20:40	..	21:23	..	21:35	22:15	22:31	22:35	..	23:20
Adamstown	Dep	18:59	19:23	19:37	20:20	..	20:45	..	21:28	..	21:40	22:20	22:35	22:40	..	23:25
Clondalkin Fonthill	Dep	19:03	19:27	19:41	20:24	..	20:49	..	21:32	..	21:45	22:24	22:40	22:44	..	23:29
Park West & Cherry Orchard	Dep	18:35	..	19:06	19:30	19:44	20:27	..	20:52	..	21:35	..	21:48	22:27	22:43	22:47	..	23:32
DUBLIN Heuston B L A	Arr	..	19:06	..	19:39	..	20:01	20:04	20:36	20:45	..	21:05	21:45	21:36	..	21:54	22:00	22:36	22:52	..	23:03	23:41
Drumcondra	Dep	18:53	..	19:23	..	20:01	21:09	22:06	23:04
DUBLIN Connolly L A	Arr	18:58	..	19:28	..	20:07	21:14	22:12	23:08
Tara Street A	Arr	19:01	..	19:31	..	20:10	21:17	22:17	23:12
DUBLIN Pearse	Arr	19:03	..	19:34	..	20:13	21:20	22:20	23:14
GRAND CANAL DOCK	Arr	19:07	..	19:39	..	20:17	21:24	22:24	23:18

Connecting Bus

Bus also operates from Irish National Stud (departs 10 minutes earlier).

Times in *italics* denote bus departure times.

A Bus Link to/from Dublin Airport available nearby.

B Bus Link (Route 145) to/from Dublin City Centre.

L LUAS Tram link to/from Dublin City & Connolly Station.

follow us on



Port Laoise - Cill Dara - Baile Átha Cliath - Domhnaigh (gan saoire phoiblí san áireamh) - Bailí ó 26.09.2021 go bhfógrófar a mhalairt
 Portlaoise - Kildare - Dublin - Sunday (excluding public holidays) - Valid from 26.09.2021 until further notice

		Sun Only	Sun Only	Sun Only	Sun Only	Sun Only	Sun Only	Sun Only	Sun Only	Sun Only	Sun Only	Sun Only	Sun Only	Sun Only	Sun Only	Sun Only
PORTLAOISE	Dep	..	09:46	11:30	11:46	13:46	15:44	..
Portarlinton	Dep	09:53	09:56	10:22	11:39	11:55	12:43	..	13:55	..	14:49	..	15:53	16:02
Monasterevin	Dep	..	10:04	11:45
KILDARE	Dep	10:07	10:14	..	10:49	11:15	11:55	12:11	12:59	13:15	14:11	14:21	..	15:35	16:08	..
NEWBRIDGE	Dep	10:56	11:21	12:02	13:21	..	14:28	..	15:41
Sallins & Naas	Dep	11:29	13:29	15:49
Hazelhatch & Celbridge	Dep	11:40	13:40	16:00
Adamstown	Dep	11:44	13:44	16:04
Clondalkin Fonthill	Dep	11:49	13:49	16:09
Park West & Cherry Orchard	Dep	11:52	13:52	16:12
DUBLIN Heuston B L A	Arr	10:37	10:43	11:04	11:22	12:01	12:28	12:40	13:28	14:01	14:40	14:54	15:28	16:21	16:38	16:42

A Bus connection to/from Dublin Airport available nearby.
L LUAS Tram link to/from Dublin City & Connolly Station.

B Bus Link (Route 145) to/from Dublin City Centre.

Port Laoise - Cill Dara - Baile Átha Cliath - Domhnaigh (gan saoire phoiblí san áireamh) - Bailí ó 26.09.2021 go bhfógrófar a mhalairt
 Portlaoise - Kildare - Dublin - Sunday (excluding public holidays) - Valid from 26.09.2021 until further notice

		Sun Only	Sun Only	Sun Only	Sun Only	Sun Only	Sun Only	Sun Only	Sun Only	Sun Only	Sun Only	Sun Only	Sun Only	Sun Only	Sun Only
PORTLAOISE	Dep	17:43	19:42	..	20:14	21:11
Portarlinton	Dep	..	16:53	16:57	..	17:52	18:30	18:52	..	19:52	19:59	20:32	..
Monasterevin	Dep
KILDARE	Dep	16:51	17:07	17:11	17:35	18:07	18:45	19:07	19:49	20:07
NEWBRIDGE	Dep	16:58	17:41	19:14	19:57	20:40
Sallins & Naas	Dep	17:49	20:48
Hazelhatch & Celbridge	Dep	18:00	20:59
Adamstown	Dep	18:04	21:03
Clondalkin Fonthill	Dep	18:09	21:08
Park West & Cherry Orchard	Dep	18:12	21:11
DUBLIN Heuston B L A	Arr	17:24	17:37	17:42	18:21	18:37	19:15	19:41	20:24	20:36	20:41	20:59	21:20	21:11	21:58

A Bus connection to/from Dublin Airport available nearby.
L LUAS Tram link to/from Dublin City & Connolly Station.

B Bus Link (Route 145) to/from Dublin City Centre.

follow us on  

Rothair ar Thraenacha Comaitéara agus DART Bicycles on Commuter and DART Trains

Tá cead rothair a thabhairt ar sheirbhísí Comaitéara agus DART idir 10:00 agus 15:30 agus tar éis 19:00 ó Luan go Aoine agus i gcaitheamh an lae Dé Sathairn agus Dé Domhnaigh.

Má tá rothar agat ar thraein Comaitéara nó DART, tabhair aird ar na nithe seo a leanas le do thoil:

- Ba chóir do chustaiméirí éirí dá rothar istigh sa stáisiún agus ar ardáin.
- Ba chóir do chustaiméirí leas a bhaint as na rampaí agus ardaitheoirí inrochtaineachta i stáisiúin seachas dul an staighre.
- Ba chóir do chustaiméirí fanacht in aice a rothair ar bord na traenach.
- Ní beidh cead ag leanbh nach mbeidh duine fásta leis rothar a thabhairt ar bord.
- Níl cead rothair leictreacha a thabhairt ar thraenacha.
- Níl cead rothair a mbeadh leantáin i bhfostú dóibh ar thraenacha.
- * Beidh srianta i bhfeidhm ar ócáidí a mbeadh imeachtaí speisialta ar siúl.

Bicycles are allowed on Commuter and DART services between 10:00 and 15:30 and after 19:00 Monday to Friday and all day Saturday and Sunday.

If you are travelling with your bicycle on Commuter or DART trains please note the following:

- Customers should dismount from bicycles when they are in the stations and on the platforms.
- Customers should use accessibility ramps and lifts rather than stairs within stations.
- Customers should stay with their bicycles onboard trains.
- Unaccompanied children cannot bring bicycles onto trains.
- No motorised bicycles are allowed on trains.
- No bicycles with attached trailers are allowed on trains.

* Restrictions will apply on occasions of special events.

Appendix G GoCar Letter of Intent



Emrajare Limited
Block 3, Millbank Business Park,
Lower Lucan Road,
Lucan,
Dublin

20th October 2023

To Whom It May Concern,

This is a letter to confirm that GoCar intends to provide a car sharing service in the Marble Arch development located at Davitt Road, Dublin 12. GoCar representatives have discussed the project with representatives of Emrajare Limited and are excited to provide a car sharing service at this location. The development consists of 113 unit dwellings, a restaurant / bar and retail unit within the Davitt Road, Dublin 12 area. The developer proposes to have available (3) three vehicles for public service within a basement carpark level and at-grade within the development.

GoCar is Ireland's leading car sharing service with over 60,000 members and over 950 cars and vans on fleet. Each GoCar which is placed in a community has the potential to replace the journeys of up to 15 private cars. The Department of Housing's Design Standards for New Apartments - Guidelines for Planning Authorities 2018 outline: "For all types of location, where it is sought to eliminate or reduce car parking provision, it is necessary to ensure... provision is also to be made for alternative mobility solutions including facilities for car sharing club vehicles."

Carsharing is a sustainable service. By allowing multiple people to use the same vehicle at different times, car sharing reduces car ownership, car dependency, congestion, noise, and air pollution. It frees up land which would otherwise be used for additional parking spaces. Most GoCar users only use a car when necessary and walk and use public transport more often than car owners.

By having GoCar car sharing vehicles in a development such as this, the residents therein will have access to pay-as-you-go driving, in close proximity to their homes, which will increase usership of the service.

I trust that this information is satisfactory. For any queries, please do not hesitate to contact me.

D Ralston

Daniel Ralston
Business Account Manager
GoCar Carsharing Ltd
Mobile: 086 0414 991
E: daniel.ralston@gocar.ie